

# PLASMA

Professional Lighting and Sign Management  
Companies of America

## Contents

---

	<i>Section</i>
<i>General Information</i>	<i>1</i>
<ul style="list-style-type: none"><li>• Purpose of Plasma</li><li>• Mission Statements</li><li>• Management</li><li>• Association Accounting</li><li>• Frequently Asked Questions</li></ul>	
<i>Membership</i>	<i>2</i>
<ul style="list-style-type: none"><li>• Member Profiles</li><li>• Territory Maps</li></ul>	
<i>By-Laws</i>	<i>3</i>
<ul style="list-style-type: none"><li>• By-Laws</li></ul>	
<i>Standard Operating Procedures</i>	<i>4</i>
<ul style="list-style-type: none"><li>• Appearance</li><li>• Committee</li></ul>	
<i>Standard Operating Procedures</i>	<i>5</i>
<ul style="list-style-type: none"><li>• Rules</li><li>• Rates</li></ul>	
<i>Standard Operating Procedures</i>	<i>6</i>
<ul style="list-style-type: none"><li>• Appendix A:<ul style="list-style-type: none"><li>○ Inter-Company Material Program</li></ul></li><li>• Appendix B:<ul style="list-style-type: none"><li>○ Interior Vehicle Materials</li></ul></li><li>• Appendix C:<ul style="list-style-type: none"><li>○ Exterior Vehicle Materials</li></ul></li></ul>	

# **PLASMA**

Professional Lighting and Sign Management  
Companies of America

## *Section 1*

### **General Information**

Purpose of Plasma  
Mission Statements  
Management  
Association Accounting  
Frequently Asked Questions

# **PLASMA**

Professional Lighting and Sign Management  
Companies of America

## **Purpose of PLASMA**

The primary purpose of the Corporation is: (i) the promotion and establishment of statements, policies and procedures to implement growth among private national and regional companies throughout the United States who provide installation and maintenance services of exterior and interior lighting and signage products, (ii) providing educational seminars, product disclosure and the dissemination of information relative to exterior and interior lighting and signage products, (iii) to promote the growth of the exterior and interior lighting and signage industry through advertising in national trade publications, development of brochures and other literature, and (iv) establishing a Membership Participation Program whereby members of the Corporation first shall have the right to furnish exterior and interior lighting and signage services within such member's declared territory relating to a customer of a Member located outside such territory.

# PLASMA

Professional Lighting and Sign Management  
Companies of America

## PLASMA MISSION

**Member to Member Mission:** To provide locally owned lighting and sign management service providers with the ability, confidence, and operational support to expand their business by collectively providing the highest level of service, workmanship and expertise to national and regional companies.

**Member to Client Mission:** Professional Lighting and Sign Management Companies of America (PLASMA) is a national alliance of independently owned service providers offering regional and national clients the highest level of service, workmanship and expertise for all of their lighting and signage needs, anytime, anywhere.

# PLASMA

Professional Lighting and Sign Management  
Companies of America

## STANDARD PROCEDURES GENERAL INFORMATION MANAGEMENT

### **Purpose:**

It is the intention of this document to state the elected management of PLASMA for 2014.

### **PLASMA Board**

Joe Marek	President, Elected 2012. Term expires 2014
Leo Murray	President-Elect/Treasurer, Elected 2010. Term expires 2015.
Bill Shank	Will Become President-Elect/Treasurer 2014. Term expires 2015.
Cliff Parks	Board Member, Elected 2012. Term expires 2015.
Shiv Sudan	Board Member, Elected 2012. Term expires 2015.
Jarad Bailey	Board Member, Elected 2013. Term expires 2015.
Darren Kimura	Ex-officio Board Member
Kirk Tuson	Ex-officio Board Member
Mike Walls	Ex-officio Board Member
Lori Landry	Executive Director

### **PLASMA Committees**

Membership– Chairpersons: Shiv Sudan/Cary Mendelsohn

Business Development/Marketing – Chairperson: Bill Shank

Associate Membership: Chairperson – Leo Murray

Purchasing: Chairperson – Tom Phillips

Technology: Chairperson – Jarad Bailey

# PLASMA

Professional Lighting and Sign Management  
Companies of America

**STANDARD PROCEDURES**  
**GENERAL INFORMATION**  
**MANAGEMENT COMPANY**

**Purpose:**  
**Standard Operating Procedures for Accounting**

**Accounting Process**

- The Executive Director or other Association Representatives are responsible for submitting all invoices and receipts to the Management Company. All purchases \$500 and over must be approved in advance by the President and/or Treasurer.
- The Management Company will bill PLASMA monthly for all expenses incurred on behalf of PLASMA.
- The accounting personnel will provide a financial statement at the end of the year and prior to each general membership meeting (Annual Meeting and Fall Meeting) to the Executive Director. Once reviewed by the Executive Director, the Board will receive copies and will review and approve or submit changes at the next scheduled Board meeting.

# PLASMA

Professional Lighting and Sign Management  
Companies of America

Frequently Asked Questions - PLASMA

## **General PLASMA billing**

If a call goes to a member company outside of the PLASMA assigned territory and the PLASMA member accepts the call, they must bill at PLASMA rates.

## **NTE Emergency Call**

If a PLASMA member is on an emergency call and they are going to exceed the NTE, they need to get in touch with the providing company. 15 minutes.

## **Low level Grievances**

Contact Executive Director at [director@plasmalighting.org](mailto:director@plasmalighting.org) if there are low level concerns before they reach the board.

# **PLASMA**

---

Professional Lighting and Sign Management  
Companies of America

## *Section 2*

**Membership** Member  
Profiles Territory Maps  
Electrical License Map



# PLASMA Member Profile

## A-1 Lighting Service Co

### A-1 Lighting Service Co

ID: 100127

1 Shirley Ave  
Revere MA 02151-5109  
(781) 289-5040 Fax: (781) 289-5041  
Web: www.A-1Lighting.com

**Voting Member:** Michael Cohen

**Escalation Contact:** Elisa Carfas

E-mail: mcohen@a-1lighting.com

---

Year Established: 1969	Estimated Sales: \$0.00
Electrical License: 13428A Masters	Owner Name: Michael Cohen
Number of Employees: 9	
Accreditations (number of): CLMC - 1	
Association Memberships: NALMCO, IESNA	

---

### Main Office

1 Shirley Ave  
Revere MA 02151-5109  
(781) 289-5040 Fax: (781) 289-5041  
Branch Manager: Michael Cohen  
E-mail: mcohen@A-1Lighting.com

### Programs/Services Offered

#### Employees/Equipment

Electricians/Journeymen	4	Aerial to 50 ft	1
Lighting Techs	3	Aerial Max Height	50 Feet
Lighting Apprentices	0	Service Vans	3
Aerial Techs	4	Geni Lift	Own
Number of Crane	1		

---

# PLASMA Member Profile

## AllBright Management Professionals, Inc.

AllBright Management Professionals, Inc. ID: 100123

7818 Professional Place  
Tampa FL 33637-6744  
(877) 267-7644 Fax: (813) 980-0321  
Web: www..AMPROpower.com

**Voting Member:** Leo Murray  
E-mail: leo@ampropower.com

---

Year Established: 2006	Estimated Sales: \$1,000,000.00
Electrical License:	Owner Name: Leo Murray, IV
Number of Employees: 12	
Accreditations (number of):	
Association Memberships: NALMCO, ICSC	

---

### Main Office

7818 Professional Place  
Tampa FL 33637-6744  
(813) 980-0300 Fax: (813) 980-0321  
Branch Manager:

### Programs/Services Offered

#### Employees/Equipment

Electricians/Journeymen	5	Aerial to 50 ft	6
Lighting Techs	6	Aerial Max Height	55 Feet
Lighting Apprentices	1	Service Vans	3
Aerial Techs	6	Geni Lift	
Number of Crane	1		

### Additional Location:

1115 Vidina Pl Ste 131  
Oviedo FL 32765-8527  
(407) 706-0312 Fax: (407) 706-0316  
Branch Manager: Mark Wilson  
E-mail: mark@ampropower.com

### Programs/Services Offered

#### Employees/Equipment

Electricians/Journeymen	2	Aerial to 50 ft	2
Lighting Techs	2	Aerial Max Height	55 Feet
Lighting Apprentices	1	Service Vans	1
Aerial Techs	2	Geni Lift	
Number of Crane	0		

---

# PLASMA Member Profile

## Anisia Electrical Services, Inc.

Anisia Electrical Services, Inc.

ID: 100222

120 N River St  
Delano MN 55328

**Voting Member:** Joel Ludwig

---

Year Established:

Estimated Sales: \$0.00

Electrical License:

Owner Name:

Number of Employees: 0

Accreditations (number of):

#Error

---

---

# PLASMA Member Profile

## Apollo Lighting & Recycling Services, Inc.

Apollo Lighting & Recycling Services, Inc. ID: 100002

PO Box 922  
Amherst NY 14226-0922  
(716) 316-2421 Fax: (716) 838-3061

**Voting Member:** Ed Snyder  
E-mail: edsnyder@apolloltg.com

**Escalation Contact:** Ed Snyder  
E-mail: apolloltg1@aol.com

---

Year Established: 2003	Estimated Sales: \$200,000.00
Electrical License:	Owner Name:
Number of Employees: 4	
Accreditations (number of):	
Association Memberships: NALMCO	

---

### Main Office

PO Box 922  
Amherst NY 14226-0922  
(716) 316-2421 Fax: (716) 838-3061  
Branch Manager: Ed Snyder

Service Manager: Ed Snyder

### Programs/Services Offered

#### Employees/Equipment

Electricians/Journeymen	1	Aerial to 50 ft	0
Lighting Techs	2	Aerial Max Height	0 Feet
Lighting Apprentices	1	Service Vans	2
Aerial Techs	2	Geni Lift	Rent
Number of Crane	0		

---

# PLASMA Member Profile

## Beacon Electric and Lighting

### Beacon Electric and Lighting

ID: 100186

2585 Rossevelt Blvd  
Eugene OR 97402-2554  
(541) 461-0291 Fax: (541) 461-2340  
Web: www.beaconlighting.com

**Voting Member:** Diana Ketts  
E-mail: dianaketts@att.net

**Escalation Contact:** Diana Ketts  
E-mail: dianaketts@att.net

---

Year Established: 1956	Estimated Sales: \$1,000,000.00
Electrical License: 20-53C	Owner Name: Diana Ketts
Number of Employees: 13	
Accreditations (number of):	
Association Memberships: NALMCO	

---

### Main Office

2585 Rossevelt Blvd  
Eugene OR 97402-2554  
(541) 461-0291 Fax: (541) 461-2340  
Web: www.beaconlighting.com  
Branch Manager: Diana Ketts  
E-mail: beaconelectric@att.net

### Programs/Services Offered

#### Employees/Equipment

Electricians/Journeymen	3	Aerial to 50 ft	3
Lighting Techs	3	Aerial Max Height	60 Feet
Lighting Apprentices	0	Service Vans	10
Aerial Techs	6	Geni Lift	Rent
Number of Crane	0		

### Main Office

2585 Rossevelt Blvd  
Eugene OR 97402-2554  
(541) 461-0291 Fax: (541) 461-2340  
Web: www.beaconlighting.com  
Branch Manager: Erin Koozer  
E-mail: erinkoozer@beaconlighting.co

### Programs/Services Offered

#### Employees/Equipment

Electricians/Journeymen	0	Aerial to 50 ft	0
Lighting Techs	0	Aerial Max Height	0 Feet
Lighting Apprentices	0	Service Vans	0
Aerial Techs	0	Geni Lift	
Number of Crane	0		

# **PLASMA Member Profile**

## **Beacon Electric and Lighting**

# PLASMA Member Profile

## Efficient Lighting & Maintenance, Inc.

Efficient Lighting & Maintenance, Inc.

ID: 100025

5a Del Mar Dr  
Brookfield CT 06804  
(203) 775-4014 Fax: (203) 775-9246  
Web: www.el-m.net

**Voting Member:** Thomas Phillips  
E-mail: thomasa@el-m.net

**Escalation Contact:** Thomas Phillips  
E-mail: thomasa@el-m.net

---

Year Established: 1981 Estimated Sales: \$5,000,000.00  
Electrical License: CT103192 NY 771 Owner Name: Thomas A. Phillips  
Number of Employees: 18  
Accreditations (number of): CALT - 16 CLEP - 1 CLMC - 1  
Association Memberships: AEE, IESNA, NALMCO, CFA

---

### Main Office

5a Del Mar Dr  
Brookfield CT 06804  
(203) 775-4014 Fax: (203) 775-9246  
Web: www.el-m.net  
Branch Manager: Tom Phillips  
E-mail: thomasa@el-m.net  
Service Manager: Tom Phillips  
E-mail: service@el-m.net

### Programs/Services Offered

#### Employees/Equipment

Electricians/Journeymen	10	Aerial to 50 ft	1
Lighting Techs	7	Aerial Max Height	40 Feet
Lighting Apprentices	3	Service Vans	15
Aerial Techs	1	Geni Lift	Own
Number of Crane	0		

---

# PLASMA Member Profile

## Energy Industries

### Energy Industries

ID: 100006

2660 Waiwai Loop  
Honolulu HI 96819-1992  
(808) 839-7300 Fax: (808) 839-7400  
Web: www.energy-industries.com

**Voting Member:** Jay Filer

E-mail: jay.filer@energy-industries.co

**Escalation Contact:** Darren Kimura

E-mail: darren.kimura@energy-industries.co

**Escalation Contact:** Jay Filer

---

Year Established: 1994 Estimated Sales: \$11,000,000.00  
Electrical License: C-21848 Owner Name:  
Number of Employees: 89  
Accreditations (number of): CLMC - 1 LC - 1  
Association Memberships: BOMA, IESNA, NALMCO, AEE

---

### Main Office

2660 Waiwai Loop  
Honolulu HI 96819-1992  
(808) 839-7300 Fax: (808) 839-7400  
Branch Manager: Van Matsushige  
E-mail: van.matsushige@energy-indus  
Service Manager: Van Matsushige  
E-mail: van.matsushige@energy-industries.

### Programs/Services Offered

#### Employees/Equipment

Electricians/Journeymen	5	Aerial to 50 ft	0
Lighting Techs	30	Aerial Max Height	30 Feet
Lighting Apprentices	0	Service Vans	8
Aerial Techs	2	Geni Lift	Own
Number of Crane	0		

### Additional Location:

10220 N. Nevada  
Spokane WA 99218  
(509) 462-5483 Fax: (509) 462-5496  
Branch Manager: Jay Filer  
E-mail: jay.filer@energy-industries.co  
Service Manager: Bob Filer  
E-mail: bob.filer@energy-industries.com

### Programs/Services Offered

#### Employees/Equipment



# PLASMA Member Profile

## Energy Industries

Electricians/Journeymen	3	Aerial to 50 ft	0
Lighting Techs	10	Aerial Max Height	50 Feet
Lighting Apprentices	0	Service Vans	5
Aerial Techs	1	Geni Lift	Rent
Number of Crane	0		

---

### Additional Location:

1510 140th Ave NE  
Bellevue WA 98005-4572  
(425) 401-0600 Fax: (425) 401-0700  
Branch Manager: Jay Filer  
E-mail: jay.filer@energy-industries.co  
Service Manager: Bob Filer  
E-mail: bob.filer@energy-industries.com

### Programs/Services Offered

#### Employees/Equipment

Electricians/Journeymen	2	Aerial to 50 ft	0
Lighting Techs	5	Aerial Max Height	50 Feet
Lighting Apprentices	0	Service Vans	2
Aerial Techs	1	Geni Lift	Rent
Number of Crane	0		

---

### Additional Location:

10175 SW Barbur Blvd  
Portland OR 97219-5908  
(971) 219-7726 Fax: (503) 977-3541  
Branch Manager: Jay Filer  
E-mail: jay.filer@energy-industries.co  
Service Manager: Bob Filer  
E-mail: bob.filer@energy-industries.com

### Programs/Services Offered

#### Employees/Equipment

Electricians/Journeymen	1	Aerial to 50 ft	0
Lighting Techs	0	Aerial Max Height	50 Feet
Lighting Apprentices	0	Service Vans	1
Aerial Techs	0	Geni Lift	Rent
Number of Crane	0		

---

# PLASMA Member Profile

## Equipment Innovators

### Equipment Innovators

ID: 100225

800 Industrial Park Dr  
Marietta GA 30062-2431  
(770) 427-9467 Fax: (770) 425-2350  
Web: [www.equipmentinnovators.com](http://www.equipmentinnovators.com)

**Voting Member:** Drew Lindsey

E-mail: [dlindsey@equipmentinnovators](mailto:dlindsey@equipmentinnovators)

---

Year Established: 1973

Estimated Sales: \$0.00

Electrical License:

Owner Name: Davidson Kennedy

Number of Employees: 65

Accreditations (number of):

#Error

---

---

# PLASMA Member Profile

## Fluorescent Maintenance Company

**Fluorescent Maintenance Company**

ID: 100007

1949 W 12th Place  
Denver CO 80204-3424  
(303) 893-5532 Fax: (303) 893-6421  
Web: www.fmclighting.com

**Voting Member:** Tom Watson

E-mail: tewatson@fmclighting.com

**Escalation Contact:** Tom Watson

E-mail: tewatson@fmclighting.com

---

Year Established: 1948

Estimated Sales: \$1,775,000.00

Electrical License:

Owner Name:

Number of Employees: 25

Accreditations (number of): CALT - 4 CLMC - 2 CSLT - 4

Association Memberships: NALMCO, IESNA

---

### Main Office

1949 W 12th Place  
Denver CO 80204-3424  
(303) 893-5532 Fax: (303) 893-6421

Branch Manager: Tom Watson

E-mail: tewatson@fmclighting.com

Service Manager: Warren Hickman

E-mail: whickman@fmclighting.com

### Programs/Services Offered

#### Employees/Equipment

Electricians/Journeymen	0	Aerial to 50 ft	3
Lighting Techs	4	Aerial Max Height	60 Feet
Lighting Apprentices	1	Service Vans	4
Aerial Techs	4	Geni Lift	Own
Number of Crane	1		

---

# PLASMA Member Profile

## G & R Electrical Construction, Inc

G & R Electrical Construction, Inc

ID: 100194

PO Box 1390  
Leander TX 78646-1390  
(512) 528-2500 Fax: (512) 528-1959  
Web: www.grelectric.net

**Voting Member:** Lisa Williams  
E-mail: lisa@grelectric.net

**Escalation Contact:** Lisa Williams  
E-mail: lisa@grelectric.net

---

Year Established: 1999 Estimated Sales: \$20,000,000.00  
Electrical License: 21768 Owner Name: George Picken, Jr.  
Number of Employees: 230  
Accreditations (number of):  
#Error

---

### Main Office

1101 CR 269  
Leander TX 78646  
(512) 528-2500 Fax: (512) 528-1959  
Web: www.grelectric.net  
Branch Manager: Fred Haranda  
E-mail: fred@grelectric.net  
Service Manager: Lisa Williams  
E-mail: lisa@grelectric.net

### Programs/Services Offered

#### Employees/Equipment

Electricians/Journeyman	125	Aerial to 50 ft	2
Lighting Techs	25	Aerial Max Height	65 Feet
Lighting Apprentices	15	Service Vans	7
Aerial Techs	6	Geni Lift	Rent
Number of Crane	0		

### Additional Location:

11875 W Little York Rd Ste 208  
Houston TX 77041-4734  
(877) 380-3803 Fax: (512) 528-1959  
Web: www.grelectric.net  
Branch Manager: Fred Haranda  
E-mail: fred@grelectric.net  
Service Manager: Lisa Williams  
E-mail: lisa@grelectric.net

### Programs/Services Offered

#### Employees/Equipment

# PLASMA Member Profile

## G & R Electrical Construction, Inc

Electricians/Journeymen	50	Aerial to 50 ft	2
Lighting Techs	20	Aerial Max Height	65 Feet
Lighting Apprentices	5	Service Vans	5
Aerial Techs	6	Geni Lift	Rent
Number of Crane	0		

---

### Additional Location:

PO Box 33668  
San Antonio TX 78265  
(210) 222-1956 Fax: (512) 528-1959  
Web: [www.grelectric.net](http://www.grelectric.net)  
Branch Manager: John Verheist  
E-mail: [john@grelectric.net](mailto:john@grelectric.net)  
Service Manager: Lisa Williams  
E-mail: [lisa@grelectric.net](mailto:lisa@grelectric.net)

### Programs/Services Offered

#### Employees/Equipment

Electricians/Journeymen	20	Aerial to 50 ft	2
Lighting Techs	10	Aerial Max Height	65 Feet
Lighting Apprentices	5	Service Vans	2
Aerial Techs	2	Geni Lift	Rent
Number of Crane	0		

---

### Additional Location:

212 Allenwood Dr  
Allen TX 75002  
(512) 528-2500 Fax: (512) 528-1959  
Web: [www.grelectric.net](http://www.grelectric.net)  
Branch Manager: Fred Haranda  
E-mail: [fred@grelectric.net](mailto:fred@grelectric.net)  
Service Manager: Lisa Williams  
E-mail: [lisa@grelectric.net](mailto:lisa@grelectric.net)

### Programs/Services Offered

#### Employees/Equipment

Electricians/Journeymen	5	Aerial to 50 ft	1
Lighting Techs	5	Aerial Max Height	65 Feet
Lighting Apprentices	1	Service Vans	2
Aerial Techs	2	Geni Lift	Rent
Number of Crane	0		

---

# PLASMA Member Profile

## Howard Lighting Products

**Howard Lighting Products**

ID: 100227

580 Eastview Dr  
Laurel MS 39443

(678) 641-2984 Fax: (601) 422-1652

Web: [www.howardlightingproducts.com](http://www.howardlightingproducts.com)

**Voting Member:** Derral Ward

E-mail: [dward@howard.com](mailto:dward@howard.com)

---

Year Established:

Estimated Sales: \$0.00

Electrical License:

Owner Name:

Number of Employees: 0

Accreditations (number of):

#Error

---

---

# PLASMA Member Profile

## Imperial Lighting

### Imperial Lighting

ID: 100009

4555 N Elston  
Chicago IL 60630-4214  
(773) 794-1150 Fax: (773) 794-8941  
Web: www.imperiallighting.com

**Voting Member:** Cary Mendelsohn  
E-mail: cary@imperiallighting.com

**Escalation Contact:** Scott Mendelsohn  
E-mail: scott@imperiallighting.com

---

Year Established: 1973 Estimated Sales: \$0.00  
Electrical License: IL Owner Name:  
Number of Employees: 40  
Accreditations (number of): CLMC - 1  
Association Memberships: IESNA, NALMCO, IFMA

---

### Main Office

4555 N Elston  
Chicago IL 60630-4214  
(773) 794-1150 Fax: (773) 794-8941  
Branch Manager: Cary Mendelsohn  
E-mail: cary@imperiallighting.com  
Service Manager: Todd Mendelsohn  
E-mail: todd@imperiallighting.com

### Programs/Services Offered

#### Employees/Equipment

Electricians/Journeymen	3	Aerial to 50 ft	3
Lighting Techs	25	Aerial Max Height	60 Feet
Lighting Apprentices	0	Service Vans	10
Aerial Techs	3	Geni Lift	Rent
Number of Crane	0		

---

# PLASMA Member Profile

## J & J Commercial Lighting

### J & J Commercial Lighting

ID: 100010

11476 Hawke Road, Suite E  
Columbia Station OH 44028  
(440) 748-0704 Fax: (440) 748-6704  
Web: www.jandj-lighting.com

**Voting Member:** Jay Schlegel  
E-mail: jandjlighting@aol.com

**Escalation Contact:** Jay Schlegel  
E-mail: jandjlighting@aol.com

---

Year Established: 2003

Estimated Sales: \$500,000.00

Electrical License:

Owner Name:

Number of Employees: 7

Accreditations (number of):

Association Memberships: NALMCO

---

### Main Office

11476 Hawke Road, Suite E  
Columbia Station OH 44028  
(440) 748-0704 Fax: (440) 748-6704  
Web: www.jandj-lighting.com  
Branch Manager: Jyl Rhoden  
E-mail: jandjlighting@aol.com

### Programs/Services Offered

#### Employees/Equipment

Electricians/Journeymen	0	Aerial to 50 ft	2
Lighting Techs	4	Aerial Max Height	42 Feet
Lighting Apprentices	0	Service Vans	4
Aerial Techs	2	Geni Lift	Rent
Number of Crane	0		

---



# PLASMA Member Profile

## Light Doctor, LLC

**Light Doctor, LLC**

ID: 100011

21706 66th Ave W  
Mountlake Terrace WA 98043-2104  
(425) 481-5001 Fax: (425) 481-4014  
Web: www.lightdoctor.com

**Voting Member:** Don Nielsen

E-mail: dnielsen@lightdoctor.com

**Escalation Contact:** Don Nielsen

E-mail: dnielsen@lightdoctor.com

---

Year Established: 1980 Estimated Sales: \$4,200,000.00  
Electrical License: LIGHTDL954L8 Owner Name:  
Number of Employees: 35  
Accreditations (number of):  
Association Memberships: NALMCO, BOMA, PRSM, IEC, ABC, NAILD

---

### Main Office

21706 66th Ave W  
Mountlake Terrace WA 98043-2104  
(425) 481-5001 Fax: (425) 481-4014  
Web: www.lightdoctor.com  
Branch Manager: Don Nielsen  
E-mail: dnielsen@lightdoctor.com  
Service Manager: Jess Coykendall  
E-mail: jcoykendall@lightdoctor.com

### Programs/Services Offered

#### Employees/Equipment

Electricians/Journeyman	6	Aerial to 50 ft	4
Lighting Techs	6	Aerial Max Height	50 Feet
Lighting Apprentices	10	Service Vans	5
Aerial Techs	0	Geni Lift	Own,Rent
Number of Crane	0		

### Main Office

21706 66th Ave W  
Mountlake Terrace WA 98043-2104  
(425) 481-5001 Fax: (425) 481-4014  
Branch Manager: Dan Thomas  
E-mail: dthomas@lightdoctor.com

### Programs/Services Offered

#### Employees/Equipment

Electricians/Journeyman	0	Aerial to 50 ft	0
Lighting Techs	0	Aerial Max Height	0 Feet
Lighting Apprentices	0	Service Vans	0
Aerial Techs	0	Geni Lift	
Number of Crane	0		

# PLASMA Member Profile

## Lighting Maintenance & Service, Inc.

Lighting Maintenance & Service, Inc.

ID: 100013

663 W 4330 S  
663 West 4330 South  
Salt Lake City UT 84123-2525  
(801) 281-0400 Fax: (801) 281-0401  
Web: www.lmslighting.com

**Voting Member:** Chris Boren  
E-mail: cboren@lmslighting.com

**Escalation Contact:** Chris Boren  
E-mail: cboren@lmslighting.com

---

Year Established: 1977	Estimated Sales: \$0.00
Electrical License: UT245985-5501	Owner Name: Chris Boren
Number of Employees: 28	
Accreditations (number of):	
#Error	

---

### Main Office

663 W 4330 S  
Salt Lake City UT 84123-2525  
(801) 281-0400 Fax: (801) 281-0401  
Branch Manager: Chris Munford  
E-mail: cmunford@lmslighting.com  
Service Manager: Matthew Berrett  
E-mail: mcberrett@lmslighting.com

### Programs/Services Offered

#### Employees/Equipment

Electricians/Journeymen	3	Aerial to 50 ft	2
Lighting Techs	9	Aerial Max Height	85 Feet
Lighting Apprentices	2	Service Vans	10
Aerial Techs	4	Geni Lift	Own
Number of Crane	1		

---

# PLASMA Member Profile

## Lighting Resources, LLC

**Lighting Resources, LLC**

ID: 100219

805 East Francis St  
Ontario CA 91781  
(909) 923-3132

**Voting Member:** Daniel Gillespie

E-mail: dan.gillespie@lightingresource

---

Year Established:

Estimated Sales: \$0.00

Electrical License:

Owner Name:

Number of Employees: 0

Accreditations (number of):

#Error

---

---

# PLASMA Member Profile

## Lighting Service, Inc

### Lighting Service, Inc

ID: 100134

1609 Lotsie Blvd  
Saint Louis MO 63132-1427  
(314) 428-0800 Fax: (314) 428-0011

**Voting Member:** George Irwin

**Escalation Contact:** George Irwin

E-mail: lsigbi@lightingserviceinc.com

E-mail: lsigbi@lightingserviceinc.com

---

Year Established: 1946 Estimated Sales: \$2,500,080.00  
Electrical License: E1554 Owner Name:  
Number of Employees: 22  
Accreditations (number of): Block - 1 CALT - 10 CLMC - 2 CSLT - 6  
Association Memberships: NALMCO, IREM, BBB, IEC

---

### Main Office

1609 Lotsie Blvd  
Saint Louis MO 63132-1427  
(314) 428-0800 Fax: (314) 428-0011  
Branch Manager: Dan Lareau  
E-mail: dlareau@lightingserviceinc.co

### Programs/Services Offered

#### Employees/Equipment

Electricians/Journeymen	2	Aerial to 50 ft	1
Lighting Techs	9	Aerial Max Height	2 Feet
Lighting Apprentices	0	Service Vans	13
Aerial Techs	3	Geni Lift	Rent
Number of Crane	0		

### Additional Location:

1609 Lotsie Blvd  
Saint Louis MO 63132-1427  
(314) 428-0800 Fax: (314) 428-0011  
Web: www.lightingserviceinc.com  
Branch Manager: Don Bachman  
E-mail: lsidon@lightingserviceinc.com

### Programs/Services Offered

#### Employees/Equipment

Electricians/Journeymen	0	Aerial to 50 ft	0
Lighting Techs	0	Aerial Max Height	0 Feet
Lighting Apprentices	0	Service Vans	0
Aerial Techs	0	Geni Lift	
Number of Crane	0		

---

# PLASMA Member Profile

## Lighting Service, Inc

### Additional Location:

Charleston IL

Branch Manager: George Irwin

### Programs/Services Offered

#### Employees/Equipment

Electricians/Journeymen	2	Aerial to 50 ft	1
Lighting Techs	1	Aerial Max Height	2 Feet
Lighting Apprentices	0	Service Vans	0
Aerial Techs	2	Geni Lift	Rent
Number of Crane	0		

---

# PLASMA Member Profile

## Lighting Technologies

### Lighting Technologies

ID: 100154

PO Box 1936  
Powder Springs GA 30127-7527  
(678) 945-0467 Fax: (678) 945-0445  
Web: [www.galightingtech.com](http://www.galightingtech.com)

**Voting Member:** William Shank  
E-mail: [bill@galightingtech.com](mailto:bill@galightingtech.com)

**Escalation Contact:** William Shank  
E-mail: [bill@galightingtech.com](mailto:bill@galightingtech.com)

---

Year Established: 2001

Estimated Sales: \$1.75

Electrical License:

Owner Name: William & Pamela

Number of Employees: 8

Accreditations (number of):

Association Memberships: NALMCO, IESNA, PMI

---

# PLASMA Member Profile

## LITECH Lighting Management Services, Inc.

LITECH Lighting Management Services, Inc. ID: 100022

3549 Johnny Appleseed Ct  
Columbus OH 43231-4985  
(614) 899-9640 Fax: (614) 899-9649

Web: [www.litechlighting.com](http://www.litechlighting.com)

**Voting Member:** Joe Marek

E-mail: [joem@litechlighting.com](mailto:joem@litechlighting.com)

---

Year Established: 1996	Estimated Sales: \$1,500,000.00
Electrical License: 45899	Owner Name: Joe Marek
Number of Employees: 15	
Accreditations (number of): CALT - 7 CLMC - 1 CSLT - 1 Sign Masters - 1	
Association Memberships: IESNA, NALMCO, NFPA, BBB, NABA	

---

### Main Office

3549 Johnny Appleseed Ct  
Columbus OH 43231-4985  
(614) 899-9640 Fax: (614) 899-9649

Branch Manager: Joe Marek

E-mail: [joem@litechlighting.com](mailto:joem@litechlighting.com)

Service Manager: Joe Marek

### Programs/Services Offered

### Employees/Equipment

Electricians/Journeymen	2	Aerial to 50 ft	2
Lighting Techs	6	Aerial Max Height	60 Feet
Lighting Apprentices	0	Service Vans	7
Aerial Techs	3	Geni Lift	Own
Number of Crane	2		

---

# PLASMA Member Profile

## Outdoor Lighting & Energy

### Outdoor Lighting & Energy

ID: 100190

PO Box 1437  
Carrboro NC 27510-3437  
(919) 596-0030 Fax: (919) 596-5480  
Web: www.ol-energy.com

**Voting Member:** Clifford Parks

**Escalation Contact:** Cliff Parks

E-mail: Cliff.parks@outdoorlightingrep

E-mail: cliff.parks@outdoorlightingrepair.co

---

Year Established: 1975

Estimated Sales: \$0.00

Electrical License:

Owner Name: Clifford Parks

Number of Employees: 16

Accreditations (number of):

#Error

---

### Main Office

202 S Hoover Rd  
Durham NC 27703-3353  
(919) 596-0030 Fax: (919) 596-5480

Web: www.ol-energy.com

Branch Manager: Mike Smith

E-mail: mike.smith@outdoorlightingrep

### Programs/Services Offered

#### Employees/Equipment

Electricians/Journeymen	2	Aerial to 50 ft	11
Lighting Techs	11	Aerial Max Height	90 Feet
Lighting Apprentices	1	Service Vans	2
Aerial Techs	11	Geni Lift	Own
Number of Crane	5		



# PLASMA Member Profile

## Rico Electric Inc.

Rico Electric Inc.

ID: 100206

190 Britannia Rd East Unit 23-24  
Mississauga ON L4Z 1W6  
(905) 824-4442 Fax: (888) 674-8212

Web: www.ricoelectric.com

**Voting Member:** Shiv Sudan

E-mail: shiv@ricoelectric.com

---

Year Established: 1984	Estimated Sales: \$2,000,000.00
Electrical License: No. 7000454	Owner Name: Subhash Sudan
Number of Employees: 12	
Accreditations (number of):	
Association Memberships: PRSM, BBB, CSAO - Construction Safety Association of Ontario	

---

### Main Office

4-150 Britannia Rd East  
Mississauga ON L4Z 2A4  
(905) 824-4442  
Branch Manager: Subhash Sudan  
E-mail: subhash@ricoelectric.com

### Programs/Services Offered

#### Employees/Equipment

Electricians/Journeymen	7	Aerial to 50 ft	2
Lighting Techs	12	Aerial Max Height	45 Feet
Lighting Apprentices	5	Service Vans	5
Aerial Techs	7	Geni Lift	Own
Number of Crane	0		

### Main Office

150 Britannia Rd East Unit 4  
Mississauga ON L4Z 2A4  
(905) 824-4442 Fax: (888) 674-8212  
Branch Manager: Shiv Sudan

### Programs/Services Offered

#### Employees/Equipment

Electricians/Journeymen	0	Aerial to 50 ft	0
Lighting Techs	0	Aerial Max Height	0 Feet
Lighting Apprentices	0	Service Vans	0
Aerial Techs	0	Geni Lift	
Number of Crane	0		

---

# PLASMA Member Profile

## Stay-Lite Lighting Inc.

### Stay-Lite Lighting Inc.

ID: 100016

W233 N2800 Roundy Circle West  
Suite 100  
Pewaukee WI 53072  
(262) 547-6811 Fax: (262) 547-4296  
Web: www.stay-lite.com

**Voting Member:** Kirk Tuson  
E-mail: ktuson@stay-lite.com

**Escalation Contact:** Kirk Tuson  
E-mail: ktuson@stay-lite.com

---

Year Established: 1970 Estimated Sales: \$7,000,000.00  
Electrical License: Owner Name: Kirk Tuson  
Number of Employees: 40  
Accreditations (number of): CALT - 17 CLEP - 2 CLMC - 2 CSLT - 15  
Association Memberships: NALMCO, AEE, IESNA

---

### Main Office

W233 N2800 Roundy Circle S  
Pewaukee WI 53072  
(262) 547-6811 Fax: (262) 547-4296  
Branch Manager: Chuck Markham  
E-mail: cmarkham@stay-lite.com  
Service Manager: Frank Rozman  
E-mail: frozman@stay-lite.com

### Programs/Services Offered

#### Employees/Equipment

Electricians/Journeymen	5	Aerial to 50 ft	6
Lighting Techs	20	Aerial Max Height	85 Feet
Lighting Apprentices	0	Service Vans	15
Aerial Techs	8	Geni Lift	Own,Rent
Number of Crane	3		

### Main Office

W233 N2800 Roundy Circle S  
Pewaukee WI 53072  
(262) 547-6811 Fax: (262) 547-4296  
Branch Manager: Brian Baker  
E-mail: service@stay-lite.com

### Programs/Services Offered

#### Employees/Equipment

Electricians/Journeymen	0	Aerial to 50 ft	0
Lighting Techs	0	Aerial Max Height	0 Feet
Lighting Apprentices	0	Service Vans	0
Aerial Techs	0	Geni Lift	
Number of Crane	0		

# PLASMA Member Profile

## Stones River Electric

### Stones River Electric

ID: 100012

1244 Gallatin Pike S  
Madison TN 37115-4613  
(615) 885-0019 Fax: (615) 883-0988  
Web: www.stonesriverelectric.com

**Voting Member:** Jami Hall

**Escalation Contact:** Jami Hall

E-mail: jhall@stonesriverelectric.com

E-mail: jhall@stonesriverelectric.com

---

Year Established: 1990 Estimated Sales: \$17,500,000.00  
Electrical License: 26717 Owner Name: Jami Hall  
Number of Employees: 125  
Accreditations (number of): Block - 3 CALT - 15 CLMC - 6 CSLT - 10 LC - 2  
Association Memberships: NALMCO, AEE, IESNA

---

### Main Office

1244 Gallatin Pike S  
Madison TN 37115-4613  
(615) 885-0019 Fax: (615) 883-0988  
Web: www.stonesriverelectric.com  
Branch Manager: Jami Hall  
E-mail: jhall@stonesriverelectric.com  
Service Manager: Darrell Starkey  
E-mail: dstarkey@stonesriverelectric.com

### Programs/Services Offered

#### Employees/Equipment

Electricians/Journeyman	35	Aerial to 50 ft	6
Lighting Techs	50	Aerial Max Height	150 Feet
Lighting Apprentices	10	Service Vans	10
Aerial Techs	8	Geni Lift	Own,Rent
Number of Crane	1		

---

# PLASMA Member Profile

## Sunshine Lighting Company

### Sunshine Lighting Company

ID: 100125

3300 Roanoke Rd  
Kansas City MO 64111-3777  
(816) 531-5252 Fax: (816) 531-1660

**Voting Member:** Jeff Altman  
E-mail: j.altman@slckc.com

**Escalation Contact:** Jeff Altman  
E-mail: j.altman@slckc.com

---

Year Established: 1977  
Electrical License:  
Number of Employees: 22  
Accreditations (number of):  
Association Memberships: NALMCO

Estimated Sales: \$0.00  
Owner Name:

### Main Office

3300 Roanoke Rd  
Kansas City MO 64111-3777  
(816) 531-5252 Fax: (816) 531-1660  
Branch Manager: Betty Jewett

### Programs/Services Offered

#### Employees/Equipment

Electricians/Journeymen	1	Aerial to 50 ft	0
Lighting Techs	15	Aerial Max Height	0 Feet
Lighting Apprentices	0	Service Vans	11
Aerial Techs	0	Geni Lift	Own
Number of Crane	0		

# PLASMA Member Profile

## Superior Lighting Inc.

### Superior Lighting Inc.

ID: 100020

2121 South 24th St  
Omaha NE 68108

(402) 345-0800 Fax: (402) 345-0815

Web: www.superiorlight.com

**Voting Member:** Bill Swarbrick

E-mail: bswarbrick@superiorlight.com

**Escalation Contact:** Paul Shy

E-mail: pshy@superiorlight.com

---

Year Established: 2004

Estimated Sales: \$5,500,000.00

Electrical License: Nebraska, Minn, SD Owner Name:

Number of Employees: 52

Accreditations (number of): CALT - 19 CLMC - 1 CSLT - 3 Sign Masters - 2

Association Memberships: BOMA, NALMCO, IFMA, Energy Star

---

### Main Office

2121 South 24th St  
Omaha NE 68108

(402) 345-0800 Fax: (402) 345-0815

Branch Manager: Bill Swarbrick

E-mail: bswarbrick@superiorlight.com

Service Manager: Greg Smith

E-mail: gsmith@superiorlight.com

### Programs/Services Offered

#### Employees/Equipment

Electricians/Journeymen	3	Aerial to 50 ft	15
Lighting Techs	22	Aerial Max Height	85 Feet
Lighting Apprentices	15	Service Vans	0
Aerial Techs	22	Geni Lift	Own
Number of Crane	5		

### Additional Location:

7930 University Blvd  
Des Moines IA 50325

(515) 255-0823 Fax: (515) 255-1027

Branch Manager: Dan Menard

E-mail: dan@superiorlight.com

Service Manager: Dan Menard

### Programs/Services Offered

#### Employees/Equipment

Electricians/Journeymen	0	Aerial to 50 ft	3
Lighting Techs	5	Aerial Max Height	70 Feet
Lighting Apprentices	4	Service Vans	5
Aerial Techs	5	Geni Lift	Own
Number of Crane	2		

---

# **PLASMA**

---

Professional Lighting and Sign Management  
Companies of America

## *Section 3*

Bylaws

BYLAWS

OF

PROFESSIONAL LIGHTING AND SIGN MANAGEMENT  
COMPANIES OF AMERICA, INC., (a Not For Profit Corporation)  
d/b/a  
PLASMA

**(Adopted August 21, 2004; amended 2005, 2006, 2008, 2010)**

1. NAME. The name of this non-profit Corporation is PROFESSIONAL LIGHTING AND SIGN MANAGEMENT COMPANIES OF AMERICA, INC. (sometimes referred herein as to the "Corporation").

2. PRINCIPAL OFFICE. The principal office of the Corporation shall be at such other place or places as the Board of Directors may from time to time designate.

3. POWERS AND PURPOSES.

3.1 General Powers. The Corporation shall have all powers as may be stated in its Articles of Incorporation and such powers as are now or may be granted hereafter by law.

3.2 Primary Purpose. The primary purpose of the Corporation is: (i) the promotion and establishment of statements, policies and procedures to implement growth among companies who provide installation and maintenance services of exterior and interior lighting, electrical and signage products, (ii) providing educational seminars, product disclosure and the dissemination of information relative to exterior and interior lighting and signage products, (iii) to promote the growth of the exterior and interior lighting, electrical and signage industry through advertising in national trade publications, development of brochures and other literature, and (iv) establishing a Membership Participation Program whereby members of the Corporation first shall have the right to furnish exterior and interior lighting and signage services within such member's declared territory relating to a customer of a Member located outside such territory.

4. MEMBERS.

4.1 Membership. Membership of the Corporation shall consist of industries, business firms and/or preferred vendors interested in promoting the purpose of the Corporation. Candidates for membership must be sponsored by the Board or a general member.

The Board of Directors may establish various classes of membership in the Corporation and shall set the requirements, including the amount of donation, if any, necessary to qualify for each class of membership. Current membership classes include:

**Active Member:** Any sole proprietorship, partnership, corporation, or other business entity that self-performs lighting services, subscribes and adheres to the standard operation procedures of the association as adopted, amended, or interpreted, and agrees to be governed by the bylaws of the association shall be eligible for active membership in the association.

**Associate Member:** Associate membership shall be limited to those not qualified for Active membership. Associate membership shall be available to any individual, sole proprietorship, partnership, corporation, or other business entity engaged in providing services related to the lighting service and sign industry as defined by the Board. Associate members are not entitled to cast a vote. Associate members must be sponsored by an active member annually at renewal.

**Voting:** Each Active member shall be entitled to cast one (1) vote at membership meetings. When more than one (1) person representing an active member attends a meeting, one (1) shall be designated as the person to cast any vote, upon the request of the Association. Associate members are not entitled to cast a vote.

4.2 Termination. Upon termination all rights, privileges, and interests of a general member, board member and/or preferred vendor shall cease.

The membership of any member may be suspended or terminated:

4.2.1 for any conduct deemed improper or prejudicial to the Corporation by an affirmative vote of two-thirds of the Board of Directors present at a regular or special meeting of such Board of Directors. In any event, a written statement of the reasons for the proposed suspension or termination shall be given to such member and the member shall be given an opportunity to be heard; or

4.2.2 for failure to pay any Assessment as described herein; or

4.2.3 for the failure to comply with the terms and conditions of the Bylaws, specifically including the Membership Participation Program described herein; or

4.2.4 the payment of a reinstatement fee as determined by the Board of Directors, if applicable,



4.3 Resignation. Any member may resign by filing a written resignation with the Corporation's Executive Director.

4.4 Reinstatement.

4.4.1 A former member whose resignation was accepted by the Board of Directors may be reinstated to membership upon:

4.4.1.1 written request filed with the Corporation's Executive Director and

4.4.1.2 by the affirmative vote of two-thirds of the Board of Directors on such terms as the Board of Directors may deem appropriate.

4.5 Transferability. Membership in the Corporation is not transferable.

4.6 No Vested Rights. No member, incorporator or Director or officer shall have any vested right, interest or privilege of, in or to the assets, functions, affairs or franchises of the Corporation.

4.7 Membership Application/Requirements. The Board of Directors shall prescribe forms, procedures, and requirements for membership qualification and approval.

4.8 Member's Territory. Upon admission, a Member will be designated with a territorial area (the "Territory") for purposes of the Membership Participation Program.

4.9 Member's Designated Representative. Each member in good standing shall be entitled to one vote in general meetings or special meetings. Such vote may be cast by the member's Owner or Chief Executive Officer. Annually members shall submit its designated representative to the Corporation's Executive Director.

The Board at its discretion may accept a designated representative who is not the member's Owner or Chief Executive Officer by written request to PLASMA's board of directors from a legally privileged member, owner or other officer of the company.

4.10 Fees, Dues and Assessments.

4.10.1 Assessment. The Board of Directors shall have the authority, by majority vote, to establish and revise an initiation fee, dues, regular or special assessments, all of which shall be defined as assessments ("Assessments"). Each member agrees that so long as he/she/it is a Member, he/she/it will be responsible

for timely payment to the Corporation of the amount or amounts established as Assessments.

4.10.2 Dues. Annual dues shall be levied as determined by the Board of Directors, and paid in payments as determined by the Board.

4.10.3 Special Assessments. Special assessments may be imposed by the Board of Directors when advertising campaigns or educational seminars or other expenses necessary to promote the purposes of the Corporation, having a majority vote of acceptance by the Board of Directors, exceed the available funds of the Corporation.

4.10.4 Payment Schedule. At the time a regular or special assessment is approved by the Board of Directors, a payment schedule shall be established and recorded in the minutes. Remittances will be made by the same method as dues.

4.10.5 Late Fee. The failure of any member to pay an Assessment by the specified due date shall be subject to a late fee of \$25.00 or 5%, whichever is greater, for each delinquent month, in addition to those amounts already in arrears.

4.10.6 Default. Upon default in the payment of an Assessment, the Board of Directors of the Corporation or its designee shall have the authority to bring legal proceedings for restitution of the amount in arrears. The member will be liable for any reasonable attorney's fees, collection agency fees and/or court costs incurred by the Corporation or its designee in attempting to collect the amounts due. Any action by the Corporation to collect any amounts due shall not preclude the Corporation from bringing subsequent actions against a member to collect further amounts that become due, nor shall the action to collect amounts due be deemed exclusive.

#### 4.11 Meetings

4.11.1 Regular Meeting. The regular annual meeting of the Corporation shall be held at such time and place as may be designated by the Board. At least one meeting shall be held each year.

4.11.2. Special Meeting Special meetings of the Corporation may be called at any time by the Board and must be called upon petition of one-third or more of the total Company Members.

4.11.3 Notice of Meeting Notice of the time and place of holding each meeting of the Corporation shall be given to each member company by mailing via US Mail, courier service, or electronic mail the same to the last known address of the designated representative of each member. The notice of any Special Meeting shall set

forth the subject or subjects to be considered and no business affecting the general interest or welfare of this Corporation shall be transacted except as specified in such notice.

4.11.4 Quorum: A quorum at any regular or special meeting of the membership shall consist of not less than fifty percent of the Company Members.

4.11.5 Member companies are required to provide a duly authorized representative with authority to legally represent its company to all general membership meetings. Attendance and participation throughout the entire meeting is required. Member companies can request excusal from all or part of the meeting in writing to the Board of Directors. The Board of Directors shall review on a case by case basis and will respond with its decision in writing.

## 5. DIRECTORS.

5.1 Function. All corporate powers shall be exercised by or under the authority of, and the business and affairs of the Corporation shall be managed under the direction of, the Board of Directors.

5.2 Powers. The affairs of the Corporation shall be managed by a Board of Directors (the "Directors" or "Board") which shall be composed of the officers of the Corporation except as may be otherwise specified in the Articles of Incorporation of the Corporation or these Bylaws, Directors, other than the directors serving by reason of their election as officers of the Corporation, shall be elected by the membership at the annual meeting and shall serve for a term of two (2) years from the date of their election. The President shall serve as the Chairman and the President-Elect shall serve as Vice Chairman of the Board.

5.3 Qualification. All Directors must be a member of the Corporation in good standing.

5.4 Compensation. The Directors of the Corporation will not receive any compensation by virtue of holding such office. However, at the discretion of the Board of Directors, such Directors may be reimbursed for expenditures reasonably incurred in furtherance of the activities and objectives of the Corporation. Notwithstanding the foregoing, the Board of Directors shall have the power, in its discretion, to contract for and to pay special compensation to Directors rendering unusual or exceptional services to the Corporation appropriate to the value of such services.

5.5 Presumption of Assent. A Director of the Corporation who is present at a meeting of the Board of Directors at which action on any corporate matter is taken shall be presumed to have assented to the action taken unless he (or she) votes against such action or abstains from voting in respect thereto because of an asserted conflict of interest.

5.6 Number of Directors. The Corporation shall have a Board of Directors of seven (7) members.

5.7 Honorary Directors. Any past president or founding members of the Corporation that are in good standing may serve as ex-officio Honorary Board Member on the Board of Directors. Honorary Board Members will not be entitled to vote.

5.8 Election and Term. The Directors serving Board of Directors positions for each new term shall be elected by a majority vote of the General Membership and shall hold office for two (2) years, or until their successors shall have been duly qualified or until their earlier resignation, removal from office or death. Each Director shall be eligible for two (2) consecutive terms for which he (or she) is elected and until his (or her) successor shall have been elected and qualified or until his (or her) earlier resignation, removal from office or death.

5.9 Vacancies. Any vacancy occurring in the Board of Directors, including any vacancies created by reason of an increase in the number of Directors shall be filled by the affirmative vote of the majority of the remaining Directors though less than a quorum of the Board of Directors, or by the sole remaining Director, as the case may be, or otherwise as required by law. A Director elected to fill a vacancy shall hold office until his successor shall have been elected and qualified or until his earlier resignation, removal from office or death.

5.10 Removal of Directors. Any director may be removed, with or without cause, by a vote of the majority of the members entitled to vote at a member meeting.

5.11 Resignation of Directors. A Director may resign at any time by delivering notice to the Board of Directors or its Chairman or to the Corporation. A resignation is effective when the notice is delivered unless the notice specifies a later effective date. If the resignation is made effective at a later date, the Board of Directors may fill the vacancy before the effective date if the Board of Directors provides that the successor does not take office until the effective date.

5.12 Quorum and Voting. A majority of the number of Directors fixed by these Bylaws or by resolution shall constitute a quorum for the transaction of business. The act of a majority of the Directors present at a meeting at which a quorum is present shall be the act of the Board of Directors, except as otherwise provided herein.

5.13 Place of Meeting. Regular and special meetings of the Board of Directors shall be held at the principal place of business of the Corporation or at such other place as may be designated by the President.

5.14 Time, Notice and Call of Meetings. An annual meeting of the Board of Directors shall be held at the principal office of the Corporation, or at such other place as the Board of Directors may designate, in the month of January of each year, or at such other time as the Board of Directors may determine, for the purpose of electing directors, and for the transaction of such other business as may properly come before the meeting. Written notice of the time and place of meetings of the Board of Directors, other than regular meetings, shall be given to each Director by either personal delivery, at least two (2) days before the meeting or by notice mailed to the Director at least ten (10) days before the meeting.

Notice of a meeting of the Board of Directors need not be given to any Director who signs a waiver of notice either before or after the meeting. Attendance of a Director at a meeting shall constitute a waiver of notice of such meeting and waiver of any and all objections to the place of the meeting, the time of the meeting, or the manner in which it has been called or convened, except when a Director states, at the beginning of the meeting, any objection to the transaction of business because the meeting is not lawfully called or convened.

Meetings of the Board of Directors may be called by the President of the Corporation or by any one Director. Members of the Board of Directors may participate in a meeting of such board by means of a conference telephone or similar communications equipment by means of which all persons participating in the meeting can hear each other at the same time. Participation by such means shall constitute presence in person at a meeting.

5.15 Action Without A Meeting. Any action required to be taken at a meeting of the Board of Directors, or any action which may be taken at a meeting of Board of Directors or a committee thereof, may be taken without a meeting if a consent in writing, setting forth the action so to be taken, signed by all the Directors, or all the members of the committee, as the case may be, is filed in the minutes of the proceedings of the board or of the committee. Such consent shall have the same effect as a unanimous vote.

5.16 Executive and Other Committees. The Board of Directors, by resolution adopted by a majority of the full Board of Directors, may designate from among its members an executive committee and one or more other committees each of which, to the extent provided in such resolution, shall have and may exercise all the authority of the Board of Directors, except as is provided by law.

5.17 Budget. The Board of Directors, on or prior to January 1<sup>st</sup> of each year, shall prepare an annual budget based on the projected income and expenses for the following year.

6. OFFICERS.

6.1 Officers. The officers of the Corporation shall consist of an Immediate Past President, President, and President Elect/Treasurer each of whom shall be elected in the manner provided herein. Such other officers and assistant officers and agents as may be deemed necessary may be elected or appointed by the Board of Directors from time to time.

6.2 Immediate Past President. The Immediate Past President is a member of the Board of Directors and shall perform such other duties as may be assigned by the President or the Bylaws.

6.3 President. The President shall be the Chief Elected Officer of the Corporation. The President shall have all of the powers and duties which are usually vested in the office of President of a corporation, including but not limited to the power to appoint committees from among the members of the Board of Directors from time to time, as he (or she) may in his (or her) discretion determine appropriate, to assist in the conduct of the affairs of the Corporation. The President shall succeed the current Immediate Past President at the termination of the Immediate Past President's year in office.

6.4 President-Elect/Treasurer. The President-Elect/Treasurer shall succeed the current President at the termination of the President's year in office. The President-Elect/Treasurer will Act for the President in the case of the President's absence or disability or when delegated the responsibility by the President. The President Elect/Treasurer will be the custodian of all of the funds of the Corporation and shall report the Corporations financial standing at Board meetings. The President-Elect/Treasurer will perform such other duties as may from time to time be prescribed by the President or the Board of Directors.

6.5 The Executive Director shall assist the President in the administration of the Corporation's affairs. His or her duties and responsibilities shall be prescribed by the Board of Directors and directed by the President. The Executive Director shall keep full and accurate financial records and shall maintain all receipts, credits, assets, liabilities and general financial transactions of the Corporation. Shall also endorse for collection or deposit to the credit of the Corporation all bills, notes, checks and other negotiable instruments of the Corporation. He or she shall give, or cause to be given, notice of all regular and special meetings of the members of the Corporation, the Board of Directors and the Board Executive Committee, and shall perform such other duties as may be prescribed by the Board of Directors and directed by the President. When authorized by the Board of Directors, he shall affix the seal of the Corporation and attest to the signature of the officer executing any contract or other document requiring the attestation of the Executive Director. The Executive Director

shall not be required to be a member of the Corporation and is not a voting member of the board or membership body and can not count for quorum.

6.7 Compensation. The compensation of all officers shall be fixed by the Board of Directors provided that no officer shall receive compensation for his (or her) services to the Corporation unless he (or she) is employed.

6.8 Removal of Officers. An officer or agent elected or appointed by the Board of Directors may be removed with or without cause by vote of the majority of the Board of Directors whenever in its judgment the best interests of the Corporation will be served thereby. Any vacancy in any office may be filled by the Board of Directors.

6.9 Qualification All Officers must be a member of the Corporation in good standing with the exception of the Executive Director and the Clerk.

6.10 Election and Term. The Office of President-Elect/Treasurer shall be elected by a majority vote of the General Membership and shall hold office for one (1) year. After the initial one (1) year term, the individual serving the Office of President-Elect/Treasurer shall succeed the President and shall serve office for a one (1) year term. After the one (1) year term the individual serving the Office of President shall succeed the Immediate Past President and shall serve office for a one (1) year term.

6.11 Vacancies. Any vacancy occurring in the officer positions shall be filled by the affirmative vote of the majority of the remaining Directors though less than a quorum of the Board of Directors, as the case may be, or otherwise as required by law. An Officer elected to fill a vacancy shall hold office until his successor shall have been elected and qualified or until his earlier resignation, removal from office or death.

6.12 Resignation of Officers. An Officer may resign at any time by delivering notice to the Board of Directors. A resignation is effective when the notice is delivered unless the notice specifies a later effective date. If the resignation is made effective at a later date, the Board of Directors may fill the vacancy before the effective date if the Board of Directors provides that the successor does not take office until the effective date.

7. COMMITTEES. The Board of Directors shall have the power and authority to establish committees, from time to time, in their sole discretion.

## 8. MEMBERSHIP PARTICIPATION PROGRAM.

8.1 Participation. Any member of this Corporation agrees to participate in the Membership Participation Program ("MPP"). Members agree to comply with the Corporation's current and approved Standard Operating Procedures (SOP) defining this policy.

8.2 Right of First Refusal. Members agree to comply with the Corporation's current and approved SOP defining this policy.

8.3 Payment for Services. Members agree to comply with the Corporation's current and approved SOP defining this policy

8.4 Licenses and Insurance. The Participating Member shall provide to the Board of Directors at the time of its admission as a Member licensing certificates, bonding and insurance requirements, and certificate of authority to conduct business in the members' state, and any other requirements, as determined by the Board of Directors. Within 14 days of a change in status, each Member is required to provide the Board notification in writing defining change.

8.5 Minimum Installation and Service Requirements. Members agree to comply with the Corporation's current and approved SOP defining this policy

8.6 Confidential Information. Each member, in and as a result of its membership in the Corporation and participating in the MPP hereunder, will be making use of, acquiring and/or adding Specific Trade Secrets developed by a member and of a special and unique nature and value to the member, including, but not limited to, the nature and material terms of business opportunities and proposals available to the member, the member's methods, systems and research, the names and address of its clients and staffing personnel, prices charged and paid by a member or its clients, technical memoranda, research reports, employment specifications, report cards, client records and files, staffing personnel records and files, services, operating procedures, charts, ledgers, accounts receivable ledgers, methods and systems, account payable ledgers, records of amounts received from clients, financial records of the member and of its clients, any and all insurance records of member, and other information, data, and documents now existing or later acquired by member, regardless of whether any such information, data, or documents qualify as a "trade secret" under applicable Federal or State law (collectively, the "Specific Trade Secrets"). As a material inducement for the Corporation to accept a member, each member covenants and agrees that it shall not at any time during the period of membership or following any termination thereof, directly or indirectly, divulge or disclose or use for any purpose whatsoever (except for the sole and exclusive benefit of a Originating Member), any Specific Trade Secrets which have been obtained by or disclosed to a member as a result of the Participating Member's services hereunder.

#### 8.7 Non-Solicitation.

8.7.0 Each member agrees it will not solicit employees from other member companies.



8.7.1 As a material inducement to for membership in the Corporation, each member agrees it will not, following termination of membership for any reason whatsoever, directly or indirectly, for a period of one (1) year, divert, solicit or take away any past, present or active prospective customer or customers of another member or any of its affiliates, or sell service or do any competitive business with a customer or active prospective customer of another member ("active prospective customer" means any entity or individual identified by name in any of a member's files), or solicit the employment, consulting or other services of any other employee of another member or any of its affiliates or otherwise induce any of such employees to leave such member or any of its affiliates' employment or breach an employment agreement therewith for the purposes of engaging in any activities competitive with the activities of another member.

8.7.2 Each member acknowledges that the occurrence of any of the events and/or activities set forth in Sections 9.6 and 9.7 are events or activities that will by their very nature result in, whether or not intentional, the disclosure or use of a members Specific Trade Secrets that are or have been obtained by or disclosed to a member as a result of its participation in the MPP and that the disclosures or use of member's Specific Trade Secrets will result in irreparable injury to the member which irreparable injury cannot adequately be compensated by damages in an action at law, and that such violation will affect the legitimate business interest of the member.

8.7.3 Each member covenants and agrees that if a member shall violate any of the member's covenants or agreements provided for pursuant to Sections 9.6 and 9.7, the Corporation and the non breaching member, in addition to the equitable relief provided for in Section 9.8 hereof, shall be entitled to an accounting and repayment of all profits, compensation, commissions, remuneration, or benefits which the breaching member, directly or indirectly, has realized and/or may realize as a result of, growing out of, or in connection with any such violation.

8.8 Equitable Relief. In the event of a breach or threatened breach by the breaching member of any of the provisions of Section 9 hereof, Corporation and the non-breaching member, in addition to and not in limitation of any other rights, remedies, or damages available to the Corporation and the non-breaching member at law or in equity, shall be entitled to a permanent injunction in order to prevent or to restrain any such breach by the breaching member or by the breaching member's partners, agents, representatives, servants, employers, employees and/or any and all persons directly or indirectly acting for or with the breaching member .

8.9 Indemnification. Each member agrees to indemnify and hold harmless the other members and the Corporation, including, without limitation, its directors, officers, shareholders, agents and employees from any and all liability, losses, claims, damages, costs, causes of action, judgments or settlements arising therefore,

including reasonable attorneys' fees, at all levels of trial, bankruptcy and appeal, caused or asserted to be caused, directly or indirectly, by or as a result of the performance of services rendered by a member to any customer of another member or any breach of the terms of the provisions of the MPP or any wrongful act, omission or negligence on the part of a member in the performance of its duties hereunder.

9. BOOKS AND RECORDS.

9.1 Books and Records. The Corporation shall keep correct and complete books and records of account and shall keep minutes of the proceedings of its Board of Directors and committees of directors.

10. CORPORATE SEAL. The Board of Directors shall, if necessary, provide a corporate seal, which shall be in circular form.

11. AMENDMENTS. These Bylaws may be altered, amended, repealed or added to by the vote of the Board of Directors of this Corporation at any regular meeting of the Board, or at a special meeting of Directors called for that purpose. Upon adoption of the amendment, such amendment shall be sent to the membership by the executive director.

12. PARLIAMENTARY AUTHORITY. Basic parliamentary procedure shall be used at all corporation meetings.

13. INDEMNIFICATION.

13.1 Actions in General. The Corporation shall indemnify any person who was or is party or is threatened to be made a party to any threatened, pending, or completed action, suit, or proceeding, whether civil, criminal, administrative, or investigative (other than an action by or in the right of the Corporation) by reason of the fact that he (or she) is or was a Director, Officer, employee or agent of the Corporation, or is or was serving at the request of the Corporation as a trustee, director, officer, employee or agent of another Corporation, partnership, joint venture, trust, or other enterprise, or is or was serving at the request of the Corporation as a trustee or administrator or in any other fiduciary capacity.

13.2 Action By or In Right of Corporation. The Corporation shall indemnify any person who was or is a party or is threatened to be made a party to any threatened, pending, or completed action, suit or proceeding by or in the right of the Corporation to procure a judgment in its favor by reason of the fact that he (or she) is or was a Director, Officer, employee or agent of the Corporation, or is or was serving at the request of the Corporation as a trustee, director, officer, employee or agent of another corporation, partnership, joint venture, trust or other enterprise, or is or was serving as a trustee or administrator or in any other fiduciary capacity under any pension, profit

sharing, deferred compensation or other plan, or any employee welfare benefit plan of the Corporation.

13.3 Determination that Indemnification is Proper. Any indemnification under Sections 14.1 or 14.2 of this Article (unless ordered by a court) shall be made by the Corporation only as authorized in the specific case upon a determination that indemnification of the Director, Officer, employee, agent, trustee, administrator or other fiduciary is proper.

The indemnification shall be against expenses (including attorneys' fees), judgment, fines, and amounts paid in settlement actually and reasonably incurred by such person in connection with the action, suit, or proceeding if he (or she) acted in good faith and in a manner he (or she) reasonably believed to be in or not opposed to the best interest of the Corporation, and, with respect to any criminal action or proceeding, had no reasonable cause to believe his (or her) conduct was unlawful. The termination of any action, suit, or proceeding by judgment, order, settlement, conviction, or upon a plea of nolo contendere or its equivalent, shall not, of itself, create a presumption that such person did not act in good faith and in a manner which he (or she) reasonably believed to be in or not opposed to the best interests of the Corporation and, with respect to any criminal action or proceeding, he (or she) had reasonable cause to believe that his (or her) conduct was unlawful.

No indemnification shall be made in respect of any claim, issue, or matter as to which the person has been adjudged to be liable for negligence or misconduct in the performance of his (or her) duty to the Corporation, unless (and only to the extent that) the court in which the action or suit was brought, or a court of equity in the county in which the Corporation has its principal office, determines upon application that, despite the adjudication of liability but in view of all circumstances of the case, the person is fairly and reasonably entitled to indemnity for the expenses which the court shall deem proper. No determination of good faith is required if a person is successful on the merits or otherwise in defense of any action suit or proceeding.

The determination shall be made (1) by the Board of Directors by a unanimous vote of all of the Directors then in office who were not parties to the action, suit or proceeding, or, (2) if the disinterested Directors so direct, the determination of the propriety of any indemnification under this Article shall be made, in a written opinion, by independent legal counsel, (i.e., a lawyer who is not a Director, Officer, employee or agent of the Corporation or such other Corporation, partnership, joint venture, trust or other enterprise, or is not or was not serving at the request of the Corporation as a trustee or administrator or in any other fiduciary capacity under any pension, profit sharing, deferred compensation or other plan, or any employee welfare benefit plan of the Corporation, and who is not a partner or professional associate of any Director,

Officer, employee or agent of the Corporation or such other Corporation, partnership, joint venture, trust or other enterprise).

Expenses (including attorneys' fees) incurred in defending a civil or criminal action, suit or proceeding shall be paid by the Corporation in advance of the final disposition thereof if authorized in the specific case by a preliminary determination, that there is a reasonable basis for a belief that the Director, Officer, employee, agent, trustee, administrator or other fiduciary met the applicable standard of conduct set forth herein, but only upon receipt of an undertaking by or on behalf of the Director, Officer, employee, agent, trustee, administrator or other fiduciary reasonably assuring that such amount will be repaid unless it shall ultimately be determined that he (or she) is entitled to be indemnified by the Corporation as authorized in this Article.

13.4 Insurance. The Corporation may purchase and maintain insurance on behalf of any person who is or was a Director, Officer, employee or agent of another Corporation, partnership, joint venture, trust or other enterprise, or is or was serving at the request of the Corporation as a trustee or administrator or in any other fiduciary capacity under any pension, profit sharing, deferred compensation or other plan, or any employee welfare benefit plan of the Corporation, against any liability asserted against him (or her) and incurred by him (or her) in any such capacity, or arising out of his (or her) status as such, whether or not the Corporation would have the power or would be required to indemnify him (or her) against the liability under the provisions of this Article or of the laws of this State.

14. LIMITATIONS ON ACTIVITIES. No part of the net earnings of the Corporation shall inure to the benefit of, or be distributable to its, trustees, Directors, Officers, or other private persons, except that the Corporation shall be authorized and empowered to pay reasonable compensation for services rendered and to make payments and distributions in furtherance of the purposes as set forth herein.

15. DISPOSITION OF ASSETS. In the event of the dissolution of the Corporation under Florida law, the Board of Directors shall, after paying or making provision for the payment of all of the liabilities of the Corporation, dispose of all of the assets of the Corporation to such organizations as are engaged in activities of the type conducted by this Corporation and described in the Corporation's Articles of Incorporation, as the Board of Directors shall determine. Any of such assets not so disposed of shall be disposed of by the Circuit Court of the county in which the principal office of the Corporation is then located, exclusively for such purposes or to such organization or organizations as said Court shall determine which are organized and operated exclusively for such purposes.

16. GENERAL.

16.1 Fiscal Year. The fiscal year of the Corporation shall be the calendar year.

16.2 Enforcement of Obligations. The Board of Directors of the Corporation, as well as a Originating Member who has contracted with a Participating Member under the MPP may enforce by appropriate action, including legal equitable action, the provisions of these bylaws for which a member or former member has become obligated by virtue of his execution of the Membership Agreement.

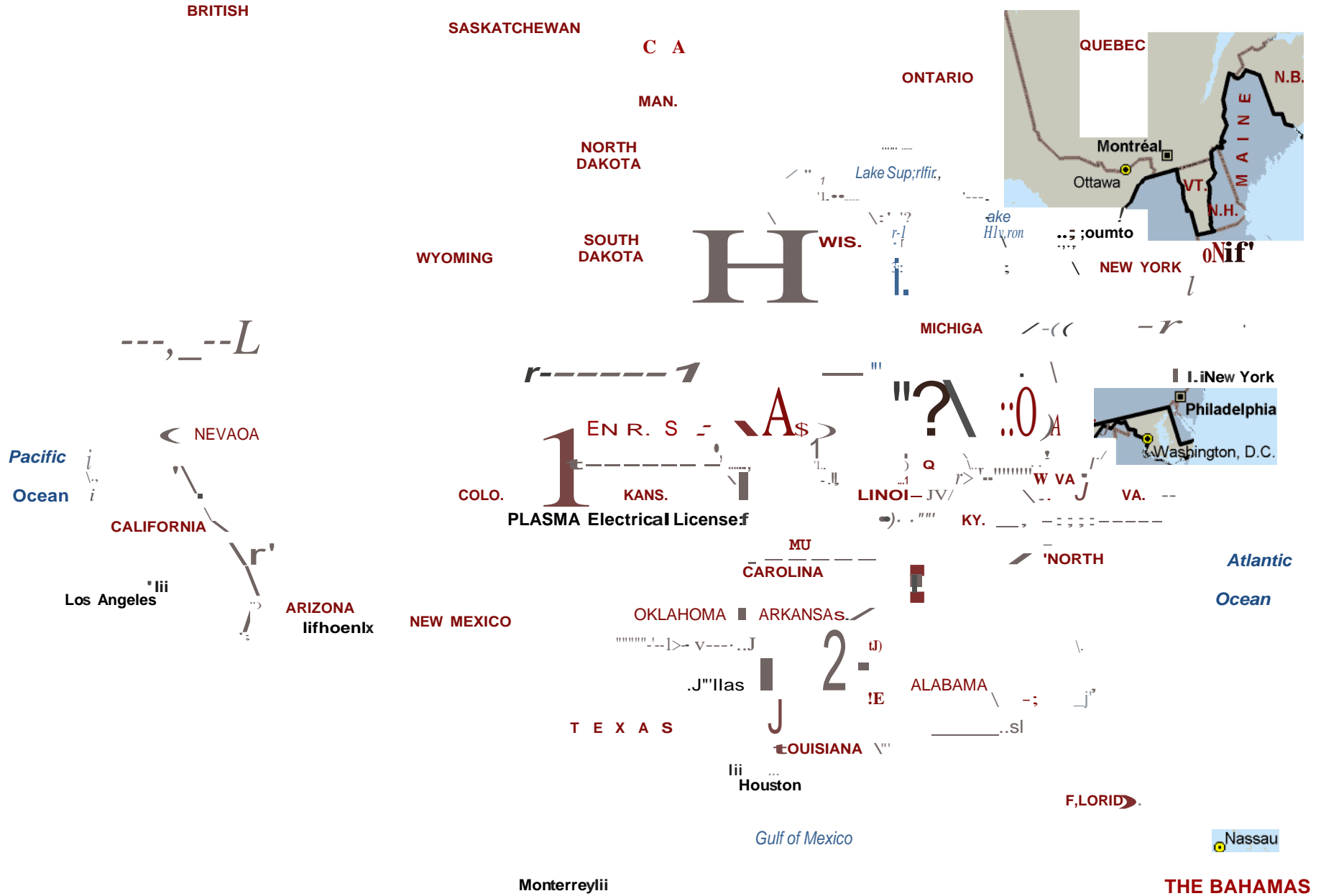
16.3 Conflict of Interest. Members shall not be financially interested in any contract made by them in their official capacity. Members shall disclose any financial interest in any matter coming before the Corporation.

16.4 Effective Date. These bylaws and future amendments thereto, unless otherwise specified, shall become effective immediately upon adoption.

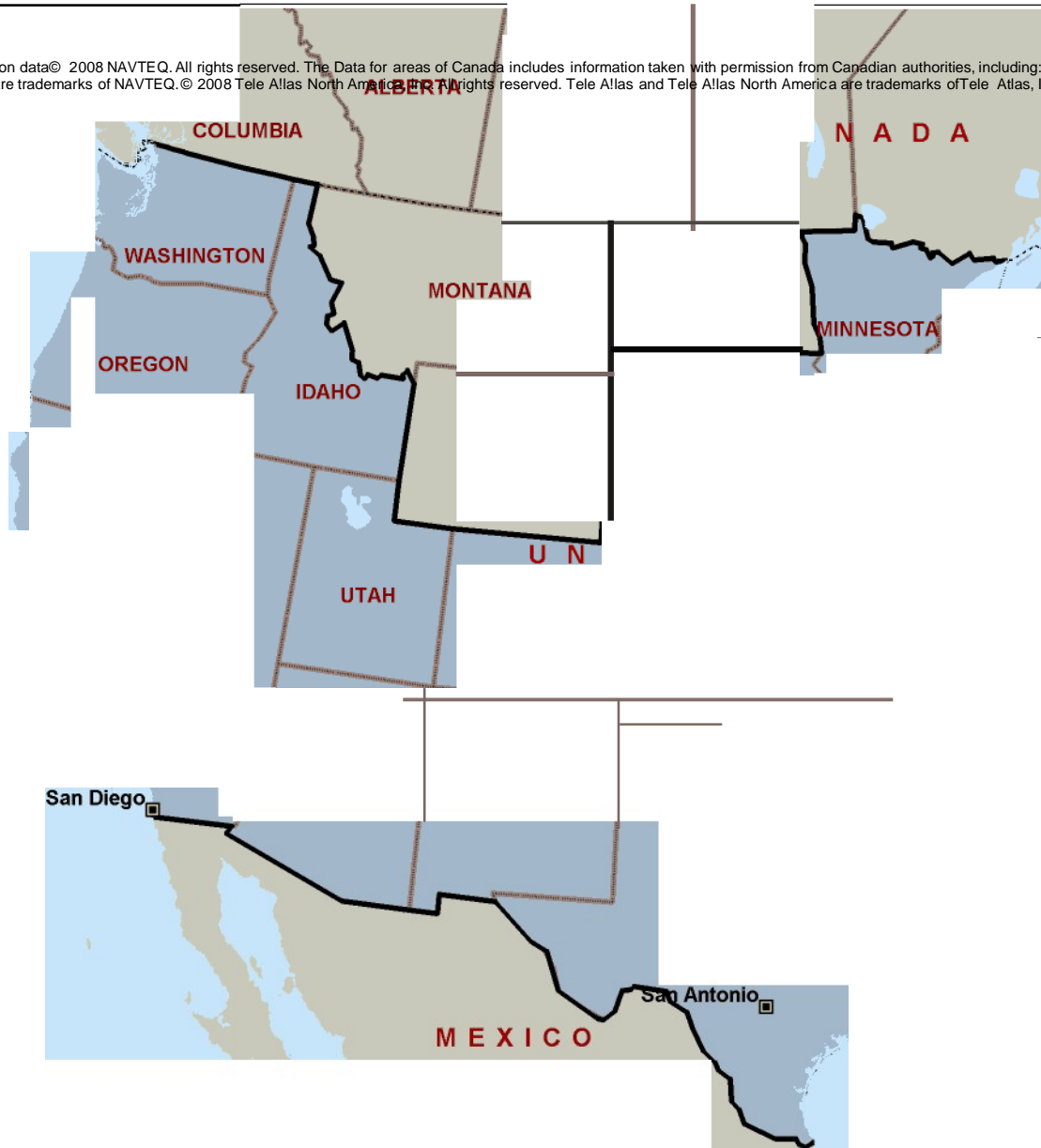
#### **Board of Directors**

<u>/s/ Kirk Tuson</u> Name/Title	<u>Dec 28, 2006</u> Date
<u>/s/ Darren Kimura</u> Name/Title	<u>Dec 28, 2006</u> Date
<u>/s/ Gary Gryder</u> Name/Title	<u>Dec 28, 2006</u> Date
<u>/s/ Mike Walls</u> Name/Title	<u>Dec 28, 2006</u> Date
<u>/s/ Jami Hall</u> Name/Title	<u>Dec 28, 2006</u> Date
<u>/s/ Devin Grandis</u> Name/Title	<u>Dec 28, 2006</u> Date
<u>/s/ Bob Phelps</u> Name/Title	<u>Dec 28, 2006</u> Date

# PLASMA electrical licenses 0710



Certain mapping and direction data © 2008 NAVTEQ. All rights reserved. The Data for areas of Canada includes information taken with permission from Canadian authorities, including: © Her Majesty the Queen in Right of Canada, © Queen's Printer for Ontario. NAVTEQ and NAVTEQ ONBOARD are trademarks of NAVTEQ. © 2008 Tele Atlas North America. All rights reserved. Tele Atlas and Tele Atlas North America are trademarks of Tele Atlas, Inc. © 2008 by Applied Geographic Systems. All rights reserved.



# **PLASMA**

Professional Lighting and Sign Management  
Companies of America

## *Section 4*

### **Standard Operating Procedures**

Appearance  
Committee



# PLASMA

Professional Lighting and Sign Management  
Companies of America

## STANDARD OPERATING PROCEDURES: APPEARANCE GRAPHIC STANDARD

### **Purpose:**

The purpose of this document is to specify the graphic standards of the PLASMA organization.

### **Standard Letterhead:**

The following letterhead will be the official internal PLASMA SOP template. Use of this document is required for ratification of SOPs by the Board of Directors.



COMMITTEE NAME:  
SUBNAME:  
DOCUMENT TITLE

To the right of this text is a large right-facing curly bracket that spans the height of the three lines, with the label "Title Nomenclature" to its right.

### **Purpose**

Sed omnis invidunt necessitatibus an, cetero praesent constituto per eu. ibus has. Liber ponderum vix at, ad usu facer atomorum consequat. Assum rationibus eam eu. Has kasd clita id, sonet insolens ex ius.

#### 1. Header

Sed omnis invidunt necessitatibus an, cetero praesent constituto per eu. Qui offendit takimata id. Tale tritani ei eos, no persequeris necessitatibus has. Liber ponderum vix at, ad usu facer atomorum consequat. Assum rationibus eam eu. Has kasd clita id, sonet insolens ex ius.

- **Subheader 1:** Tale tritani ei eos, no persequeris necessitatibus has.
- **Subheader 2:** Tale tritani ei eos, no persequeris necessitatibus has.
  - Tale tritani ei eos, no persequeris necessitatibus has.
  - Tale tritani ei eos, no persequeris necessitatibus has.

#### 2. Header

Sed omnis invidunt necessitatibus an, cetero praesent constituto per eu. Qui offendit takimata id. Tale tritani ei eos, no persequeris necessitatibus has. Liber ponderum vix at, ad usu facer atomorum consequat. Assum rationibus eam eu. Has kasd clita id, sonet insolens ex ius.

TITLE: SOP – APPEARANCE - GS  
VERSION: 2  
STATUS: Active  
APPROVED DATE: 8-17-06

To the right of this text is a large right-facing curly bracket that spans the height of the four lines, with the label "Document Info" to its right.

} Purpose section describes document

} Content section w/ appropriate subsections

# PLASMA

Professional Lighting and Sign Management  
Companies of America

## STANDARD OPERATING PROCEDURES: APPEARANCE FILE NAMES

### **Purpose:**

It is the intention of this document to identify the standard operating procedure nomenclature for file names.

### **Nomenclature:**

Files in the SOP director will follow the nomenclature below.



COMMITTEE



GROUP



DOCUMENT

### **Example:**

SOP-RATES-DEFINITIONS

### **Groups:**

- Appearance – Consistency standards for SOP documents
- Committee – Internal Committee processes
- Rules – PLASMA rules for participation
- Billing – Processes for billing

# PLASMA

Professional Lighting and Sign Management  
Companies of America

**COMMITTEE NAME:**

**SUBNAME:**

**DOCUMENT TITLE**

**Purpose**

Sed omnis invidunt necessitatibus an, cetero praesent constituto per eu. Qui offendit takimata id. Tale tritani ei eos, no persequeris necessitatibus has. Liber ponderum vix at, ad usu facer atomorum consequat. Assum rationibus eam eu. Has kasd clita id, sonet insolens ex ius.

**1. Header**

Sed omnis invidunt necessitatibus an, cetero praesent constituto per eu. Qui offendit takimata id. Tale tritani ei eos, no persequeris necessitatibus has. Liber ponderum vix at, ad usu facer atomorum consequat. Assum rationibus eam eu. Has kasd clita id, sonet insolens ex ius.

- **Subheader 1:** Tale tritani ei eos, no persequeris necessitatibus has.
- **Subheader 2:** Tale tritani ei eos, no persequeris necessitatibus has.
  - Tale tritani ei eos, no persequeris necessitatibus has.
  - Tale tritani ei eos, no persequeris necessitatibus has.

**2. Header**

Sed omnis invidunt necessitatibus an, cetero praesent constituto per eu. Qui offendit takimata id. Tale tritani ei eos, no persequeris necessitatibus has. Liber ponderum vix at, ad usu facer atomorum consequat. Assum rationibus eam eu. Has kasd clita id, sonet insolens ex ius.

# PLASMA

Professional Lighting and Sign Management  
Companies of America

## **STANDARD OPERATING PROCEDURES:** **COMMITTEE** **NEW MEMBERS**

### **Purpose:**

It is the intention of this document to identify the standard operating procedure for processing new PLASMA members.

### **Process:**

1. Prospective New Members must be sponsored by an existing member in good standing.
  - a. If No sponsoring company, after a pre-qualification by the membership committee, company may be considered for membership.
2. Prospective New Member will complete and submit to the chairperson of the PLASMA membership committee a complete application.
3. The Committee will approve Prospective New Member application.
4. Prospective New Member must review and accept PLASMA presentation.
5. Representative of PLASMA will conduct a site visit of the Prospective New Member's main facility.
6. PLASMA Membership Committee Chairperson will complete a new member summary package and circulate to PLASMA General Membership.
7. PLASMA General Membership will review and send back comments to PLASMA Membership Committee Chairperson.
8. If Prospective New Member company receives favorable feedback from PLASMA General Membership, PLASMA Membership Committee Chairperson will extend an invitation to a PLASMA General Membership Meeting.
9. New membership orientation will be conducted by PLASMA President and 1 Board Member
10. President provides recommendation to the PLASMA Board of Directors.
11. Sponsoring company will introduce Prospective New Company to general membership. The general membership will vote on the membership.
12. The President of PLASMA will ask the Prospective New Member to leave the room and initiate a vote to accept the Prospective New Member.
13. If vote in favor receives a 80% or above of General Membership Prospective New Member will become a PLASMA General Membership.

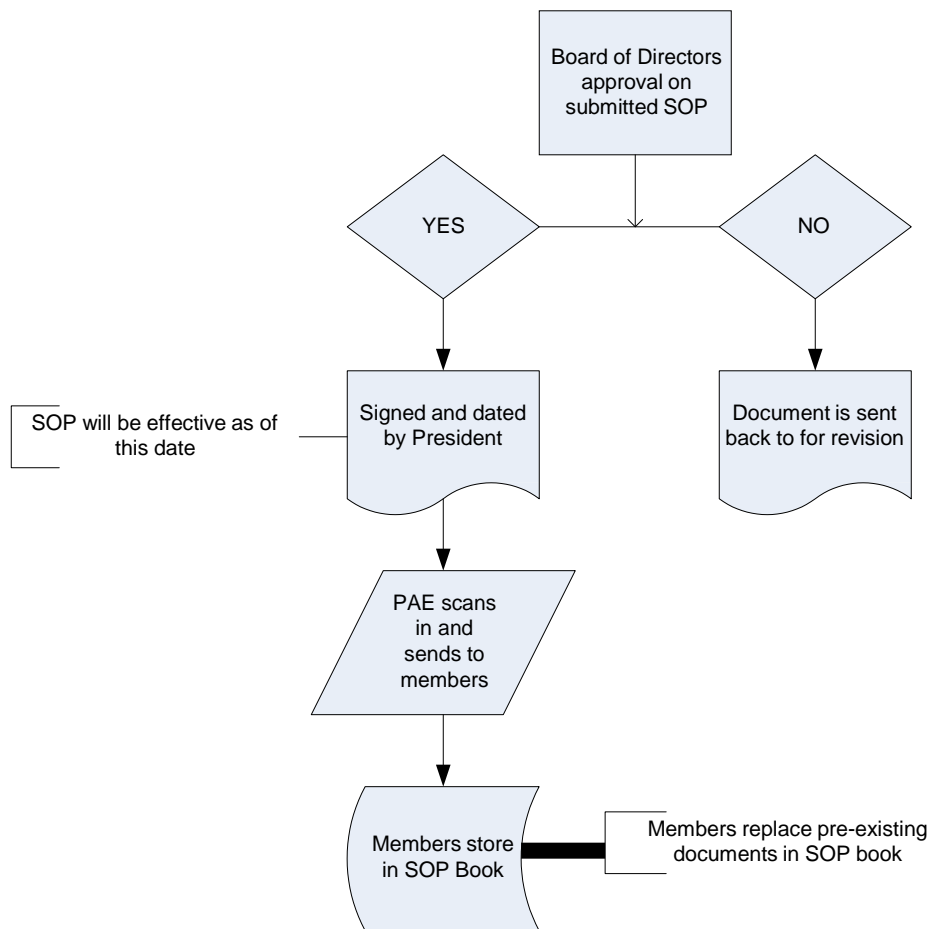
# PLASMA

Professional Lighting and Sign Management  
Companies of America

## STANDARD OPERATING PROCEDURES: COMMITTEE RATIFICATION

**Purpose:**

It is the intention of this document to identify the standard operating procedure for SOP ratification.



# **PLASMA**

Professional Lighting and Sign Management  
Companies of America

## *Section 5*

### **Standard Operating Procedures**

Rules

Rates

# PLASMA

Professional Lighting and Sign Management  
Companies of America

## **STANDARD OPERATING PROCEDURES:** **RULES** **EMERGENCY**

**Purpose:**

Define emergency service call procedure acceptance.

Define an emergency: Any call within the same day aka 24 hour.

**Stated:**

- Response time will be mutually agreed to.

TITLE: SOP – RULES – EMERGENCY  
VERSION: 2  
STATUS: Active  
APPROVED DATE: 8-23-07

[www.plasmalighting.org](http://www.plasmalighting.org)

# PLASMA

Professional Lighting and Sign Management  
Companies of America

## **STANDARD OPERATING PROCEDURES:** **RULES** **EXTERIOR TRUCK EQUIPMENT**

**Purpose:**

It is the intention of this document to state the approved minimum Exterior Truck Equipment that must be in each PLASMA vehicle.

<b>PLASMA Equipment: Exterior Lighting Truck</b>
August, 2004
Minimum vertical reach: 35'
<b>Tools/Equipment:</b>
6' ladder "A"
8' ladder "A"
10' ladder "A"
24' Ext. ladder
1/4"- 1/2' Nut drivers
Reg & Phillips Screw drivers
Wirestrippers
Adjustable Wrench
Allen Wrench Set
Big open end wrench set for pole bases
Hammer
Tape Measure
Fish Tape
Digital voltage/amp meter
Electric Tape
Caulk & Caulk Gun
Socket set
Hack Saw
Conduit bender
Cordless drill
Hammer drill
Camera
Lockout/tag out kit
5 point harness
Torch set
Lift straps
Tie down straps
Hard hats & Safety glasses



# **PLASMA**

Professional Lighting and Sign Management  
Companies of America

## **STANDARD OPERATING PROCEDURES:**

### **RULES**

### **EXTERIOR TRUCK MATERIALS**

**Purpose:**

It is the intention of this document to state the approved minimum Exterior Truck Materials that must be in each PLASMA vehicle.

**Please Refer to Appendix “C” of the OFFICIAL PLASMA SOP MANUAL.**

# PLASMA

Professional Lighting and Sign Management  
Companies of America

## STANDARD OPERATING PROCEDURES: RULES INTERIOR TRUCK EQUIPMENT

**Purpose:**

It is the intention of this document to state the approved minimum Interior Truck Equipment that must be in each PLASMA vehicle.

Prices subject to manufacturer's changes.

1/4"- 1/2' Nut drivers
Reg & Phillips Screw drivers
Wirestrippers/cutter
Adjustable Wrench
Allen Wrench Set
Big open end wrench set
Hammer
Tape Measure
Fish Tape
Digital voltage/amp meter
Electric Tape
Caulk & Caulk Gun
Socket set
Hack Saw
Conduit bender
Cordless drill
Hammer drill
Camera
Lockout/tag out kit
5 point harness
Torch set
Lift straps
Tie down straps
Hard hats & Safety glasses
6' ladder "A"
8' ladder "A"
12' ladder "A"
24' Ext. ladder

# **PLASMA**

Professional Lighting and Sign Management  
Companies of America

## **STANDARD OPERATING PROCEDURES:**

### **RULES**

#### **INTERIOR TRUCK MATERIALS**

**Purpose:**

It is the intention of this document to state the approved minimum Interior Truck Materials that must be in each PLASMA vehicle.

**Please Refer to Appendix “B” of the OFFICIAL PLASMA SOP MANUAL.**

# PLASMA

Professional Lighting and Sign Management  
Companies of America

## **STANDARD OPERATING PROCEDURES:** **RULES** **GRIEVANCE**

### **Purpose:**

The grievance committee is responsible for conflict resolution

### **Notes:**

The President of PLASMA will be the chairperson of the committee. The committee shall be served by the board of directors

Section 1: Complaints against members of the Association alleging misconduct in their relations with the general public, the Association, or its members, including violations of the Bylaws and/or Standard Operating Procedures, shall be in writing and signed by the complaining party and shall state plainly the complaint. They shall be filed at the principal office of the Association and referred to the Grievance Committee. The complained-of member shall be given a copy of the complaint and have thirty (30) days to answer it in writing. The member shall cooperate with the Grievance Committee and, on request, shall disclose pertinent, but not privileged, facts and records germane to the investigation.

Section 2: At a time and place designated by it, the Grievance Committee shall hold a hearing on the complaint. At the hearing, the complainant and the complained-of member may appear personally and with or by counsel. Nevertheless, if, after preliminary investigation, the Committee deems the complaint groundless, it may dismiss it.

Section 3: The Grievance Committee shall have the right to refer a complaint to the complained-of member's affiliated association and request an investigation and report or to work concurrently with a similar committee of the affiliated association, provided, however, that any referral to an affiliated association may be withdrawn if its investigation and report are not completed within three (3) months.

Section 4: After an investigation and hearing on a complaint, the Grievance Committee's findings, based on the preponderance of the evidence, and recommendations shall be submitted in writing promptly to the Board. A copy shall be given to the complained-of member. Upon receiving a written request, the Board shall, before making a final decision, give the member an opportunity to appear in person and with or by counsel and be heard in support of the member's defense.

Section 5: The Board, after reviewing the Grievance Committee's findings and recommendations, may find that the complained-of member engaged in misconduct or violated the Code of Ethics and, on the basis of such a finding, may adjudge that the member be censured, suspended, or expelled from the Association. No censure, suspension, or expulsion shall occur, however, except by an affirmative vote of the majority of the Board of Directors. The decision of the Board shall be put in writing, and a copy shall be given to the complainant and the complained-of member.

# PLASMA

## Professional Lighting and Sign Management Companies of America

Section 6: Any decision of the Board suspending or expelling a member shall be final and shall become effective according to its terms unless, within thirty (30) days thereafter, the member shall file in the principal office of the Association a written appeal to the membership of the Association, in which event the decision of the Board shall be held in abeyance pending determination of the appeal at the next general membership meeting. Upon appeal, the decision of the Board shall be affirmed or reversed by a majority vote of the Active members present and voting at the general membership meeting.

Section 7: All communications, notices, or pleadings by or from a party to a grievance proceeding shall be sent by certified or registered mail to the Association at its principal place of business. All notices or communications by or from the Association to a party to the proceeding shall be sent by certified or registered mail to the principal office of the party as last entered upon the records of the Association.

# PLASMA

Professional Lighting and Sign Management  
Companies of America

## **STANDARD OPERATING PROCEDURES:** **RULES** **MANAGEMENT**

### **Purpose:**

It is the intention of this document to state the elected management of PLASMA for 2012.

### **PLASMA Board**

Joe Marek	President, Elected 2012. Term expires 2014
Leo Murray	President-Elect/Treasurer, Elected 2010. Term expires 2015.
Bill Shank	Will Become President-Elect/Treasurer 2014. Term expires 2015.
Cliff Parks	Board Member, Elected 2012. Term expires 2015.
Shiv Sudan	Board Member, Elected 2012. Term expires 2015.
Jarad Bailey	Board Member, Elected 2013. Term expires 2015.
Darren Kimura	Ex-officio Board Member
Kirk Tuson	Ex-officio Board Member
Mike Walls	Ex-officio Board Member
Lori Landry	Executive Director

### **PLASMA Committees**

Membership– Chairpersons: Shiv Sudan/Cary Mendelsohn

Business Development/Marketing – Chairperson: Bill Shank

Associate Membership: Chairperson – Leo Murray

Purchasing: Chairperson – Tom Phillips

Technology: Chairperson – Jarad Bailey



# PLASMA

Professional Lighting and Sign Management  
Companies of America

## **STANDARD OPERATING PROCEDURES:**

### **RULES** **PAYMENT**

**Purpose:**

It is the intention of this document to define the terms of payment.

**Definition:**

- All invoices should be submitted to the Providing Contractor within 15 days after completion of service.
- Completion date is the last date signed by a customer and the invoice should be submitted within 15 days.
- Work orders must be submitted with invoice.
- Work order must be complete.
- All invoice discrepancies should be notified within 15 days or full payment is expected.
- The Providing Contractor shall call the Service Contractor with the work order number and completion date from the site.
- A complete copy of work verification form should be faxed the next day.
- Do not delay billing issues from either company.



# PLASMA

Professional Lighting and Sign Management  
Companies of America

## **STANDARD OPERATING PROCEDURES:**

### **RULES** **QUOTATIONS**

**Purpose:**

It is the intention of this document to state the rules on Quotations for service.

**Dates:**

1. Free quotations should be responded to within 3 days or turned down during the initial call and must be broken out with labor and material.
2. Paid quotes must be received within 3 days or turned down during the initial call and must be broken out with labor and material or payment can be denied and work order can be reassigned.
3. Large quotes take time and members must work together during the initial call to set a true timeline.

Quotes:

4. Quotes are good for 30 days.
5. After 30 days, the Providing Contractor needs to discuss w/ the service contractor a requote.

# **PLASMA**

Professional Lighting and Sign Management  
Companies of America

## **STANDARD OPERATING PROCEDURES:** **RULES**

# **PLASMA**

Professional Lighting and Sign Management  
Companies of America

## **STANDARD OPERATING PROCEDURES:** **RULES**

[www.plasmalighting.org](http://www.plasmalighting.org)

# PLASMA

---

Professional Lighting and Sign Management  
Companies of America

-

# PLASMA

Professional Lighting and Sign Management  
Companies of America

## **STANDARD OPERATING PROCEDURES:** **RULES** **DUES REQUIREMENTS**

### **Purpose:**

It is the intention of this document to define the membership categories and dues requirements for PLASMA membership.

**Active Member:** Any sole proprietorship, partnership, corporation, or other business entity that self-performs lighting services, subscribes and adheres to the standard operation procedures of the association as adopted, amended, or interpreted, and agrees to be governed by the bylaws of the association shall be eligible for active membership in the association.

**Associate Member:** Associate membership shall be limited to those not qualified for Active membership. Associate membership shall be available to any individual, sole proprietorship, partnership, corporation, or other business entity engaged in providing services related to the lighting service and sign industry as defined by the Board. Associate members are not entitled to cast a vote. Associate members must be sponsored by an active member annually at renewal.

### **Dues**

In addition to a one-time new member initiation fee, annual dues shall be levied as determined by the Board of Directors and paid annually

### **Active Membership dues includes:**

- Use of the PLASMA name/logo
- Free registration for up to two representatives at the Annual Meeting and Fall Meeting
- Inclusion in PLASMA marketing materials
- Logo, company bio and contact information on PLASMA website
- Access to all Membership Benefit Programs including discounts on services, equipment and materials

### **Associate Membership dues includes:**

- Time to present at the Annual Meeting (March) to discuss new products, services, technology, etc.
- Networking opportunities with Active Members during lunch and dinner.
- Use of the PLASMA name/logo
- Free registration for 2 representatives at the Annual Meeting Welcome Dinner, day one of the general membership meeting, member facility tour and dinner.
- Inclusion in PLASMA marketing materials
- Logo included on PLASMA website
- Optional: Exhibiting opportunity at the Annual Meeting during lunch (additional fee applies)

# PLASMA

Professional Lighting and Sign Management  
Companies of America

## **STANDARD OPERATING PROCEDURES:** **RULES** **MEMBERSHIP REQUIREMENTS**

### **Purpose:**

It is the intention of this document to state the requirements for PLASMA membership.

**PLASMA members are required to maintain all of the following nine (9) requirements to remain an active member in good standing. Current PLASMA members will have six (6) months to comply.**

### **All members must maintain all nine (9) of the following:**

1. Provide a published safety policy.
2. Provide a published drug policy.
3. Provide a published recycling policy.
4. Have a website.
5. Post the PLASMA logo and link to the PLASMA website on their company website.
6. Have at least \$1,000,000 in general liability insurance.
7. Have necessary licensing in their region.
8. Maintain positive ratings among other members:
  - a. Current with membership dues.
  - b. Good meeting attendance record. Per bylaws (4.11.5) members are required to send an authorized representative to all PLASMA meetings.
  - c. Active participation in committee work, etc.
9. Maintain positive industry standards
  - a. Good relationships with vendors.
  - b. Good relationships with customers.
  - c. Good credit record.

**PLASMA members are required to maintain, at minimum, two of the following five (5) requirements to remain an active member in good standing. Current PLASMA members will have twelve (12) months to comply.**

### **All members must maintain two (2) of the following:**

1. Be an Energy Star Partner
2. Have at least one individual on staff with an industry accreditation such as CLMC, CLEP, LC, CEM, etc.
3. All technicians on staff participate in NALMCO certification program (CALT, CSLT), are a journeyman electrician and/or equivalent as approved by PLASMA.
4. Have an electrical license even if not required in their region.
5. Have the PLASMA logo on their company vehicles.

TITLE: SOP – RULES – MEMBERSHIP REQUIREMENTS  
VERSION: 2  
STATUS: APPROVED  
APPROVED DATE: 6/6/12

# PLASMA

Professional Lighting and Sign Management  
Companies of America

## **STANDARD OPERATING PROCEDURES:** **RULES** **MEMBERSHIP PROCEDURES FOR NEW MEMBERS**

### **Purpose:**

This document aims to define the process to become a PLASMA member.

### **Membership Definitions:**

*Active Member:* Any sole proprietorship, partnership, corporation or other business entity that self-performs lighting services, subscribes and adheres to the standard operation procedures of the association as adopted, amended, or interpreted, and agrees to be governed by the bylaws of the association shall be eligible for active membership in the association.

Active Membership dues includes:

- Use of the PLASMA name/logo
- Free registration for up to two representatives at the Annual Meeting and Fall Meeting
- Inclusion in PLASMA marketing materials
- Logo, company bio and contact information on PLASMA website
- Access to all Membership Benefit Programs including discounts on services, equipment and materials

*Associate Member:* Associate membership shall be limited to those not qualified for Active membership. Associate membership shall be available to any individual, sole proprietorship, partnership, corporation, or other business entity engaged in providing services related to the lighting service and sign industry as defined by the Board. Associate members are not entitled to cast a vote. Associate members must be sponsored by an active member annually at renewal.

Associate Membership dues includes:

- Time to present at the Annual Meeting (February/March) to discuss new products, services, technology, etc.
- Networking opportunities with Active Members during lunch and dinner.
- Use of the PLASMA name/logo
- Free registration for 2 representatives at the Annual Meeting Welcome Dinner, day one of the general membership meeting, member facility tour and dinner.
- Inclusion in PLASMA marketing materials
- Logo included on PLASMA website
- Optional: Exhibiting opportunity at the Annual Meeting during lunch (additional fee applies)

### **Membership Process:**

1. Complete a membership application (active or associate) and return to Executive Director.
2. The Executive Director will submit the application to the Membership or Association Membership Committee.
3. The committee will review the applications.
  - a. If the company is applying for active membership and meets the requirements (see definition above), the membership committee will schedule a site visit.

TITLE: SOP – RULES – MEMBERSHIP PROCESS  
VERSION: 1  
STATUS: APPROVED  
APPROVED DATE: 6/6/12

[www.plasmalighting.org](http://www.plasmalighting.org)

# PLASMA

## Professional Lighting and Sign Management Companies of America

- i. Once a site visit has been completed, the committee will submit their recommendations to the Board.
    - b. If the company is applying for associate membership, a site visit is not required, but may be conducted and the committee will submit their recommendations to the Board.
  4. The Board will review the recommendations of the committees and present the potential members to the general active membership for a vote (in person or by e-mail). Associate members are not entitled to cast a vote.
    - a. Potential members have the option to attend the Annual Meeting or the Fall Meeting prior to accepting the membership invitation.
  5. Once a potential member is approved by the majority of the membership and the company accepts the membership agreement and submits the annual dues payment, the company will officially become a member.



# PLASMA

Professional Lighting and Sign Management  
Companies of America

TITLE: SOP-RATES-DEFINITION

VERSION: 2  
STATUS: Active  
APPROVED DATE: 8-17-06

[www.plasmalighting.org](http://www.plasmalighting.org)

# PLASMA

Professional Lighting and Sign Management  
Companies of America

## STANDARD OPERATING PROCEDURES:

TITLE: SOP – RATES - HOLIDAY  
VERSION: 2  
STATUS: Active  
APPROVED DATE: 8-17-06

[www.plasmalighting.org](http://www.plasmalighting.org)

# **PLASMA**

Professional Lighting and Sign Management  
Companies of America

TITLE: SOP – RATES - LABOR

[www.plasmalighting.org](http://www.plasmalighting.org)

Page 2 of 2

# PLASMA

---

Professional Lighting and Sign Management  
Companies of America

TITLE: SOP – RATES - MATERIALS  
VERSION: 4  
STATUS: Active  
APPROVED DATE: 9-11-08

[www.plasmalighting.org](http://www.plasmalighting.org)

Page 1 of 1

# PLASMA

---

Professional Lighting and Sign Management  
Companies of America

TITLE: SOP – RATES - NTE  
VERSION: 4  
STATUS: ACTIVE  
APPROVED DATE: 8/23/07

[www.plasmalighting.org](http://www.plasmalighting.org)

# PLASMA

Professional Lighting and Sign Management  
Companies of America

TITLE: SOP – RATES – OVERTIME  
VERSION: 3  
STATUS: Active  
APPROVED DATE: 8-23-0

[www.plasmalighting.org](http://www.plasmalighting.org)

Tab 8

# **PLASMA**

Professional Lighting and Sign Management  
Companies of America

## *Section 6*

**Standard Operating Procedures** Appendix A:  
Interior Vehicle Materials Appendix B:  
Exterior Vehicle Materials







Professional Lighting and Sign Management  
Companies of America

The following document is an attachment to PLASMA Standard Operating Procedures. For instruction on use, please refer to PLASMA Official SOP Manual.

## "INTERIOR VEHICLE MATERIALS" APPENDIX "A"

BALLAST/FLR/4L-32T8/120V/INST START			
BALLAST/FLR/STARTER/13,30,40W/FS4			
BALLAST/FLR/STARTER/14,15,20W/FS2			
BALLAST/FLR/STARTER/FS25			
BALLAST/FLR/STARTER/FS5			
BALLAST/HID/1L-100HPS/120V			
BALLAST/HID/1L-100MH/120/277V			
BALLAST/HID/1L-100MH/MULTI			
BALLAST/HID/1L-320MH-PS/277V			
BALLAST/HID/1L-320MH-PS/277V			
BALLAST/HID/1L-150MH/120/277V/FCAN			
BALLAST/HID/1L-350MH/MULTI			
BALLAST/HID/1L-320MH-PS/277V			
BALLAST/HID/1L-175MH/ MT			
BALLAST/HID/1L-250MH/ MT			
BALLAST/HID/1L-320MH-PS/MT			
BALLAST/HID/1L-350MH-PS/277V			
BALLAST/HID/1L-350MH-PS/MT			
BALLAST/HID/1L-400MH/MT			
BALLAST/HID/2L-400MV/120V			
BALLAST/HID/1L-70WMHFL/277V			
BALLAST/OTHER/1L-50MR16-HALOGEN/120V			
LAMP/FLR/108T12/COOL WHITE			
LAMP/FLR/10T4/COOL WHITE			
<b>FLUORESCENT LAMPS</b>			
LAMP/FLR/13T5/COOL WHITE			
LAMP/FLR/13T8/COOL WHITE			
LAMP/FLR/14T5/3000K			
LAMP/FLR/14T8/COOL WHITE			
LAMP/FLR/15T12/COOL WHITE			
LAMP/FLR/15T8/3000K			
LAMP/FLR/15T8/3500K			
LAMP/FLR/15T8/COOL WHITE			
LAMP/FLR/15T8/DAYLIGHT			
LAMP/FLR/15T8/3000K			
LAMP/FLR/16W/FROSTED/G30/GLOBE			
LAMP/FLR/F17T4/WARM WHITE			
LAMP/FLR/17T8/3000K			
LAMP/FLR/17T8/3000K			
LAMP/FLR/17T8/3500K			
LAMP/FLR/17T8/3500K			
LAMP/FLR/17T8/3500K/SHATTER GUARD			
LAMP/FLR/17T8/4100K			
LAMP/FLR/18T8/COOL WHITE/K26			
LAMP/FLR/20T12/3500K			
LAMP/FLR/20T12/3500K/DAYLIGHT			
LAMP/FLR/20T12/COOL WHITE			
LAMP/FLR/21T12/COOL WHITE/30 INCHES			
LAMP/FLR/21T5/3500K			
LAMP/FLR/21T5/3500K			
LAMP/FLR/24T12/COOL WHITE/800MA			
LAMP/FLR/24T5/HR3500K/COMPACT			
LAMP/FLR/25T12/COOL WHITE 28 INCHES			
LAMP/FLR/25T12/COOL WHITE 33 INCHES			
LAMP/FLR/25T8/3000K			
LAMP/FLR/25T8/3000K/SHATTER GUARD			
LAMP/FLR/25T8/3500K			
LAMP/FLR/25T8/3500K			
LAMP/FLR/25T8/3500K/SHATTER GUARD			
LAMP/FLR/25T8/4100K			
LAMP/FLR/25T8/4100K/SHATTER GUARD			
LAMP/FLR/28T5/HR3000K			
LAMP/FLR/28T5/HR3500K			
LAMP/FLR/28T5/HR3500K			
LAMP/FLR/30T12/3000K/RS			
LAMP/FLR/30T12/COOL WHITE			

TITLE: SOP – APPENDIX B - INTERIOR VEHICLE MATERIALS  
VERSION: 2  
STATUS: DRAFT  
APPROVED DATE:



Professional Lighting and Sign Management  
Companies of America

The following document is an attachment to PLASMA Standard Operating Procedures. For instruction on use, please refer to PLASMA Official SOP Manual.

**"INTERIOR VEHICLE MATERIALS"  
APPENDIX "A"**

LAMP/FLR/30T12/COOL WHITE/21 INCHES			
LAMP/FLR/30T12/3500K/RS			
LAMP/FLR/30T12/WARM WHITE			
LAMP/FLR/30T8/COOL WHITE			
LAMP/FLR/30T8/DAYLIGHT/36 INCHES			
LAMP/FLR/30T8/NATURAL			
LAMP/FLR/31T8/3500K/U1 5/8 INCHES			
LAMP/FLR/31T8/4100K/U1 5/8 INCHES			
LAMP/FLR/32T8/3000K			
LAMP/FLR/32T8/3000K/SHATTER GUARD			
LAMP/FLR/32T8/3500K			
LAMP/FLR/32T8/3500K/SHATTER GUARD			
LAMP/FLR/32T8/3500K/U6			
LAMP/FLR/32T8/4100K			
LAMP/FLR/32T8/4100K/SHATTER GUARD			
LAMP/FLR/32T8/4100K/U6			
LAMP/FLR/32T8/4100K/WATT MISER			
LAMP/FLR/32T8/HR3500K			
LAMP/FLR/36T12/COOL WHITE/800MA			
LAMP/FLR/36T12/DAYLIGHT/800MA			
LAMP/FLR/40T12/3000K			
LAMP/FLR/40T12/3500K			
LAMP/FLR/40T12/3500K/ENERGY SAVER			
LAMP/FLR/40T12/3500K/U6			
LAMP/FLR/40T12/4100K			
LAMP/FLR/40T12/4100K/U6			
LAMP/FLR/40T12/5000K			
LAMP/FLR/40T12/6500K			
LAMP/FLR/40T12/COOL WHITE/ENERGY SAVER			
LAMP/FLR/40T12/COOL WHITE/ENERGY SAVER/U6			
LAMP/FLR/40T12/NATURAL			
LAMP/FLR/40T12/PLAQ			
LAMP/FLR/40T12/WARM WHITE/ENERGY SAVER			
LAMP/FLR/40T12/WARM WHITE/ENERGY SAVER/U6			
LAMP/FLR/40T8/3000K/SHATTER GUARD			
LAMP/FLR/40T8/3500K			
LAMP/FLR/40T8/3500K/SHATTER GUARD			
LAMP/FLR/40T8/4100K			
LAMP/FLR/40W/3500K			
LAMP/FLR/40W/HR3500K			
LAMP/FLR/42T4/HR3000K/A-4P			
LAMP/FLR/42T4/HR3500K/A-4P			
LAMP/FLR/42T6/COOL WHITE			
LAMP/FLR/42T6/WARM WHITE			
LAMP/FLR/48T10/COOL WHITE/1500MA			
LAMP/FLR/48T10-JACKETED/COOL WHITE/1500MA			
LAMP/FLR/48T12/3000K/800MA			
LAMP/FLR/48T12/3500K			
LAMP/FLR/48T12/3500K/800MA			
LAMP/FLR/48T12/3500K/WARM WHITE			
LAMP/FLR/48T12/COOL WHITE			
LAMP/FLR/48T12/COOL WHITE/800MA			
LAMP/FLR/48T12/DAY LIGHT/800MA			
LAMP/FLR/48T12/NATURAL			
LAMP/FLR/4T5/COOL WHITE			
LAMP/FLR/54T5/HR3500K/800MA			
LAMP/FLR/54T5/HR3500K			
LAMP/FLR/54T5/HR4100K/800MA			
LAMP/FLR/60T10/COOL WHITE/1500MA			
LAMP/FLR/60T10-JACKETED/COOL WHITE/1500MA			
LAMP/FLR/60T12/COOL WHITE			
LAMP/FLR/60T12/COOL WHITE/800MA			
LAMP/FLR/60T12/3500K/800MA			
LAMP/FLR/64T6/WARM WHITE			
LAMP/FLR/6T5/COOL WHITE			
LAMP/FLR/70T8/HR4000K			
LAMP/FLR/72T10/COOL WHITE/1500MA			
LAMP/FLR/72T10-JACKETED/COOL WHITE/1500MA			
LAMP/FLR/72T12/3000K/800MA			
LAMP/FLR/72T12/3500K/800MA			

TITLE: SOP – APPENDIX B - INTERIOR VEHICLE MATERIALS  
VERSION: 2  
STATUS: DRAFT  
APPROVED DATE:



Professional Lighting and Sign Management  
Companies of America

The following document is an attachment to PLASMA Standard Operating Procedures. For instruction on use, please refer to PLASMA Official SOP Manual.

## "INTERIOR VEHICLE MATERIALS" APPENDIX "A"

LAMP/FLR/72T12/3500K/800MA			
LAMP/FLR/72T12/3500K/DAYLIGHT			
LAMP/FLR/72T12/COOL WHITE			
LAMP/FLR/72T12/COOL WHITE/800MA			
LAMP/FLR/72T12/NATURAL/800MA			
LAMP/FLR/72T8/COOL WHITE			
LAMP/FLR/72T8/WARM WHITE			
LAMP/FLR/7T4/COOL WHITE			
LAMP/FLR/84T12/COOL WHITE			
LAMP/FLR/84T12/COOL WHITE/800MA			
LAMP/FLR/84T12/3500K/DAYLIGHT/800MA			
LAMP/FLR/8T5/COOL WHITE			
LAMP/FLR/8T9/COOL WHITE/CIRCLELINE			
LAMP/FLR/96T10-JACKETED/COOL WHITE/1500MA			
LAMP/FLR/96T12.NATURAL/800MA			
LAMP/FLR/96T12/3000K			
LAMP/FLR/96T12/3000K/800MA			
LAMP/FLR/96T12/3500K			
LAMP/FLR/96T12/3500K/800MA			
LAMP/FLR/96T12/3500K/DAYLIGHT			
LAMP/FLR/96T12/3500K/ENERGY SAVER			
LAMP/FLR/96T12/COOL WHITE/1500MA			
LAMP/FLR/96T12/COOL WHITE/800MA /COLD TEMP			
LAMP/FLR/96T12/COOL WHITE/800MA /WARM WHITE			
LAMP/FLR/96T12/COOL WHITE/800MA ENERGY SAVER			
LAMP/FLR/96T12/COOL WHITE/ENERGY SAVER			
LAMP/FLR/96T12/COOL WHITE/ENERGY SAVER			
LAMP/FLR/96T12/NATURAL			
LAMP/FLR/96T8/3500K			
LAMP/FLR/96T8/3500K			
LAMP/FLR/96T8/3500K/400MA			
LAMP/FLR/96T8/4100K			
LAMP/FLR/96T8/4100K			
<b>COMPACT FLOURESCENT LAMPS</b>			
LAMP/FLR/COMPACT/12T9/COOL WHITE			
LAMP/FLR/COMPACT/13W/835/DD			
LAMP/FLR/COMPACT/13W/HR2700K			
LAMP/FLR/COMPACT/13W/HR2700K/DD			
LAMP/FLR/COMPACT/13W/HR2700K/DS			
LAMP/FLR/COMPACT/13W-4PIN/HR3500K			
LAMP/FLR/COMPACT/13W/HR3500K/DD			
LAMP/FLR/COMPACT/13W/HR3500/DDE			
LAMP/FLR/COMPACT/13W/HR3500K/DS			
LAMP/FLR/COMPACT/13W/HR4100K/DS			
LAMP/FLR/COMPACT/13W-2PIN/HR3500K			
LAMP/FLR/COMPACT/13W-4PIN/HR3500K			
LAMP/FLR/COMPACT/15W-R30			
LAMP/FLR/COMPACT/15W/MED BASE			
LAMP/FLR/COMPACT/18W/30			
LAMP/FLR/COMPACT/18W-4PIN/HR3500K			
LAMP/FLR/COMPACT/18T5/HR3000K			
LAMP/FLR/COMPACT/18T5/HR3500K			
LAMP/FLR/18T8			
LAMP/FLR/COMPACT/18W/HR4100K/DD			
LAMP/FLR/COMPACT/20W/MED BASE			
LAMP/FLR/COMPACT/20W/R40-MED BASE			
LAMP/FLR/COMPACT/22W/27			
LAMP/FLR/COMPACT/24W/30			
LAMP/FLR/COMPACT/26W/835/DD			
LAMP/FLR/COMPACT/26W/HR3000K/DDE			
LAMP/FLR/COMPACT/26W-2PIN/HR4100K			
LAMP/FLR/COMPACT/26W-4PIN/HR2700K			
LAMP/FLR/COMPACT/26W-4PIN/HR3500K			
LAMP/FLR/COMPACT/28W/27			
LAMP/FLR/COMPACT/36T5/HR3000K			
LAMP/FLR/COMPACT/40T5/HR3000K			
LAMP/FLR/COMPACT/40T5/HR3500K			
LAMP/FLR/COMPACT/40T5/HR4100K			

TITLE: SOP – APPENDIX B - INTERIOR VEHICLE MATERIALS  
VERSION: 2  
STATUS: DRAFT  
APPROVED DATE:



Professional Lighting and Sign Management  
Companies of America

The following document is an attachment to PLASMA Standard Operating Procedures. For instruction on use, please refer to PLASMA Official SOP Manual.

## "INTERIOR VEHICLE MATERIALS" APPENDIX "A"

LAMP/FLR/COMPACT/5W/HR2700K			
LAMP/FLR/COMPACT/5W/HR2700K			
LAMP/FLR/COMPACT/5W/HR4100K			
LAMP/FLR/COMPACT/7W/827/DS			
LAMP/FLR/COMPACT/7W/835/DS			
LAMP/FLR/COMPACT/7W/HR2700K			
LAMP/FLR/COMPACT/9W/HR4100K/DS			
LAMP/FLR/COMPACT/9W/HR2700K			
LAMP/FLR/COMPACT/9W/HR4100K			
LAMP/FLR/COMPACT/BICAD SPIRAL/27W			
LAMP/FLR/COMPACT/BICAD SPIRAL/27W/5000K			
LAMP/FLR/COMPACT/BECADD SPIRAL/271M			
LAMP/FLR/COMPACT/BICAD SPIRAL/261M			
LAMP/FLR/COMPACT/BICAD SPIRAL/213M			
LAMP/FLR/COMPACT/EL/018			
<b>HID LAMPS</b>			
LAMP/HID/1000W/MET HAL/UNV			
LAMP/HID/100W/HPS/2-PRONG			
LAMP/HID/100W/HPS/MED			
LAMP/HID/100W/HPS/UNV			
LAMP/HID/100W/MERCURY VAPOR			
LAMP/HID/100W/MERCURY VAPOR			
BALLAST/FLR/2L-96T12/1500MA/120V/ELECT			
LAMP/HID/100W/MET HAL/UNV/MED BASE			
LAMP/HID/100W/MET HAL/UNV/MED BASE			
LAMP/HID/100W/MET HAL/UNV-COATED/MED BASE			
LAMP/HID/100W/MET HAL/UNV-COATED/MED BASE			
LAMP/HID/150W/MET HAL/UNV/MED			
LAMP/HID/175W/MET HAL/UNV			
LAMP/HID/175W/MET HAL/UNV/MED			
LAMP/HID/250W/MET HAL/UNV			
LAMP/HID/250W/MET HAL-COATED/UNV			
LAMP/HID/250W/MET HAL-PS/BU			
LAMP/HID/320W/MET HAL-PS/BU/ED37			
LAMP/HID/320W/MET HAL-PS-COATED/BU/ED28			
LAMP/HID/320W/MET HAL-PS-COATED/BU/ED37			
LAMP/HID/350W/MET HAL-PS/UNV			
LAMP/HID/350W/MET HAL-PS-COATED/BU			
LAMP/HID/350W/MET HAL-PS-COATED/BU/ED28			
LAMP/HID/350W/MET HAL-PS-COATED/BU/ED37			
LAMP/HID/350W/MET HAL-PS-COATED/UNV			
LAMP/HID/360W/MET HAL/BU/ENERGY SAVER			
LAMP/HID/360W/MET HAL-COATED/BU/ENERGY SAVER			
LAMP/HID/360W/MET HAL-COATED/BU/ENERGY SAVER			
LAMP/HID/400W/HPS/UNV			
LAMP/HID/400W/MERCURY VAPOR			
LAMP/HID/400W/MET HAL/UNV			
LAMP/HID/400W/MET HAL-COATED/UNV			
LAMP/HID/400W/MET HAL-COATED/VBU			
LAMP/HID/400W/MET HAL-PS/BU/ED28			
LAMP/HID/50W/MET HAL/UNV/MED BASE			
LAMP/HID/50W/MET HAL-PS/BU			
LAMP/HID/70W/MET HAL/UNV/MED BASE			
LAMP/HID/70W/MET HAL-PAR-SPOT/830			
LAMP/HID/70W/MET HAL-PS-PAR-SPOT/UNV			
LAMP/HID/70W/HPS/MED			
LAMP/HID/100W-PAR38/FL3K			
LAMP/HID/70W-PAR38/WFL			
LAMP/HID/150W/MET HAL/DOUBLE ENDED			
LAMP/HID/70W/MET HAL/DOUBLE ENDED			
<b>INCANDESCENT LAMPS</b>			
LAMP/INCAN/100W/DC-BAYONET/QUARTZ			
LAMP/INCAN/100W/ROUGH SVC/STGPG6			
LAMP/INCAN/100W/120V			
LAMP/INCAN/100WA-19/120V			
LAMP/INCAN/100WA-19/ROUGH SVC/120V			

TITLE: SOP - APPENDIX B - INTERIOR VEHICLE MATERIALS  
VERSION: 2  
STATUS: DRAFT  
APPROVED DATE:



Professional Lighting and Sign Management  
Companies of America

The following document is an attachment to PLASMA Standard Operating Procedures. For instruction on use, please refer to PLASMA Official SOP Manual.

## "INTERIOR VEHICLE MATERIALS" APPENDIX "A"

LAMP/INCAN/100WA-19/ROUGH SVC-COATED/120V			
LAMP/INCAN/100WA-S/130V			
LAMP/INCAN/100W-FROSTED-G40-GLOBE			
LAMP/INCAN/100W-WHITE-G40-GLOBE			
LAMP/INCAN/110W A-21-FROSTED/ROUGH SVC/COATED			
LAMP/INCAN/11W-FROSTED/120V			
LAMP/INCAN/120WBR40-RFL.FLD/130V			
LAMP/INCAN/120WR40-RFL.FLD			
LAMP/INCAN/147/7VT3-1/4			
LAMP/INCAN/150T3/QUARTZ/120V			
LAMP/INCAN/150T3/QUARTZ/120V			
LAMP/INCAN/150W-PAR38/HALOGEN-STGPG6			
LAMP/INCAN/150WR40-RFL.FLD-ENERGY SAVER			
LAMP/INCAN/150WR40-RFL.FLD-ENERGY SAVER-COATED			
LAMP/INCAN/15W-T6 1/2/145V			
LAMP/INCAN/200W/120V			
LAMP/INCAN/200W/120V-130V/MED BASE			
LAMP/INCAN/20T3/QUARTZ/BIPIN/12V			
LAMP/INCAN/20WG4/12V			
LAMP/INCAN/20W-MR11/HALOGEN/NARROW FLD			
LAMP/INCAN/20W-MR16/HALOGEN-FLD			
LAMP/INCAN/20W-T6 1/2 DC/FROSTED			
LAMP/INCAN/20W-T6 1/2/FROSTED			
LAMP/INCAN/24V/VIDEO LAMP			
LAMP/INCAN/25W/CLEAR CANDLE			
LAMP/INCAN/25WA-19-CLEAR			
LAMP/INCAN/25W-G16 1/2-GLOBE/CLEAR			
LAMP/INCAN/25W-G25-GLOBE/CLEAR			
LAMP/INCAN/25W-G25-GLOBE/FROSTED			
LAMP/INCAN/30W-R20/130V			
LAMP/INCAN/35W/12V/29553-5/QUARTZ			
LAMP/INCAN/35W-MR16/SP20FRA			
LAMP/INCAN/4044/12V 12W			
LAMP/INCAN/40WA-15/COATED			
LAMP/INCAN/40WA-15/COATED			
LAMP/INCAN/40WF-CL/120V			
LAMP/INCAN/40W-G16 1/2-GLOBE/CLEAR			
LAMP/INCAN/45WPAR/HALOGEN-FLD			
LAMP/INCAN/45WPAR/HALOGEN-SPOT			
LAMP/INCAN/45WR30/RFL.FLD			
LAMP/INCAN/500W/DOUBLE ENDED QUARTZ/130V			
LAMP/INCAN/50W/MR16/HALOGEN-FLD40			
LAMP/INCAN/50W/MR16/HALOGENNARROW FLD25			
LAMP/INCAN/50W-MR16/DC BASE			
LAMP/INCAN/50W-MR16/HALOGEN			
LAMP/INCAN/50W-PAR20/HALOGEN-FLD			
LAMP/INCAN/50W-PAR20/HALOGEN-FLD/130V			
LAMP/INCAN/50W-PAR20/HALOGEN-FLD/SPLNFL			
LAMP/INCAN/50W-PAR30/HALOGEN-FLD/130V			
LAMP/INCAN/50W-PAR30/HALOGEN-NARROW FLD			
LAMP/INCAN/50WR20/130V			
LAMP/INCAN/590/MINIATURE			
LAMP/INCAN/60A-21			
LAMP/INCAN/60W-G40-GLOBE/CLEAR			
LAMP/INCAN/60WA-S/130V			
LAMP/INCAN/60W-PAR /HALOGEN-NARROW FLD/120V			
LAMP/INCAN/60W-PAR /HALOGEN-NARROW FLD/130V			
LAMP/INCAN/60W-PAR16/HALOGEN-NARROW FLD			
LAMP/INCAN/60W-PAR16/HALOGEN-NARROW FLD			
LAMP/INCAN/60W-PAR30/HALOGEN/HSP10			
LAMP/INCAN/60W-SGBL/120V			
LAMP/INCAN/65W-R30/REFL FLD/130V			
LAMP/INCAN/65WR30-RFL.FLD/STGPG16			
LAMP/INCAN/75-65W-R30/REFL FLD/COATED			
LAMP/INCAN/75W-12V/DC BAYONET/QUART			
LAMP/INCAN/75W-PAR30/HALOGEN-FLD/130V			
LAMP/INCAN/75W-PAR30/HALOGEN-FLD/130V			
LAMP/INCAN/75W-PAR30/HALOGEN-FLD/35%/130V			
LAMP/INCAN/75W-PAR30/HALOGEN-FLD/LHALFL/130V			

TITLE: SOP - APPENDIX B - INTERIOR VEHICLE MATERIALS  
VERSION: 2  
STATUS: DRAFT  
APPROVED DATE:



Professional Lighting and Sign Management  
Companies of America

The following document is an attachment to PLASMA Standard Operating Procedures. For instruction on use, please refer to PLASMA Official SOP Manual.

**"INTERIOR VEHICLE MATERIALS"  
APPENDIX "A"**

LAMP/INCAN/75W-PAR30/HALOGEN-FLD/LHALFL/130V			
LAMP/INCAN/75W-PAR30/HALOGEN-FLD/LHFL			
LAMP/INCAN/75W-PAR30/HALOGEN-FLD/SPL/NFL			
LAMP/INCAN/7W/130V			
LAMP/INCAN/8W/120V			
LAMP/INCAN/8W-MR11/FLAME LITE			
LAMP/INCAN/90W/130V			
LAMP/INCAN/90W-PAR38/HALOGEN-FLD/130V			
LAMP/INCAN/90W-PAR38/HALOGEN-2 FLD/120V			
LAMP/INCAN/90W-PAR38/HALOGEN-FLD25/130V			
LAMP/INCAN/90W-PAR38/HALOGEN-SSPL FLD/130V			
LAMP/INCAN/90W-TB/H/130V			
MISC /OTHER/75W/HALO/TRACK LITE/BLACK			
MISC OTHER/SWITCH/1X878-TOGGLE			
MISC/OTHER/1 CIRCUIT END CAP			
MISC/OTHER/1 CIRCUIT STRAIGHT CONNECTOR			
MISC/OTHER/4X1-1/2D SQ BOX/4S-SPL			
MISC/OTHER/BATTERY/ELB0602N			
MISC/OTHER/BATTERY/S640/645			
<b>MISC</b>			
MISC/FLR U-LAMP METAL CLIPS			
MISC/OTHER/FREEZER CORD "FEMALE"			
MISC/OTHER/FREEZER Cord "MALE"			
MISC/OTHER/GLASS GLOBE			
MISC/OTHER/LOW VOLT TRACK HEAD/TFBIEBK			
MISC/OTHER/LOW VOLT TRACK HEAD/TGRIEBK			
MISC/OTHER/PLUG/522488			
MISC/OTHER/PLUG/9025922			
MISC/OTHER/PLUG/FEMALE/ER5-300			
MISC/OTHER/PLUG/FEMALE/ER5-310B			
MISC/OTHER/PLUG/FEMALE/ER5-320			
MISC/OTHER/PLUG/FEMALE/ER5-335			
MISC/OTHER/PLUG/MALE/EP5-225			
MISC/OTHER/PLUG/MALE/EP5-300			
MISC/OTHER/PLUG/MALE/EP5-320			
MISC/OTHER/PLUG/MALE/EP5-335			
MISC/OTHER/PLUG/MALE/EP5-340			
MISC/OTHER/PLUG/MALE/P-3-2-18			
MISC/PRISMATIC LENS/2X4			
MISC/OTHER/REPLACEMENT RCADD Lens			
MISC/OTHER/4' VAPORTITE/LENS			
MISC/OTHER/8' VAPORTITE/LENS			
MISC/OTHER/SWITCH/KLIXON			
MISC/OTHER/WRAP LENS/1X4			
MISC/TGRDS/4'T12/CLEAR W/CAPS			
MISC/TGRDS/4'T8/CLEAR W/CAPS			
MISC/TGRDS/5'T12/CLEAR W/CAPS			
MISC/TGRDS/6'T12/CLEAR W/CAPS			
MISC/TGRDS/8'T12/CLEAR W/CAPS			
MISC/TGRDS/8'T8/CLEAR W/CAPS			
MISC/TGRDS/T6/CLEAR W/CAPS			
MISC/TGRDS/T8-T12/END CAPS			
SOCKET/FLR/72"/28163G001			
SOCKET/FLR/ANTHONY/BI-PIN			
SOCKET/FLR/BI-PIN			
SOCKET/FLR/BIPIN/1650SW			
SOCKET/FLR/BIPIN/258892			
SOCKET/FLR/BIPIN/326W			
SOCKET/FLR/BIPIN/3911W			
SOCKET/FLR/BIPIN/750779			
SOCKET/FLR/BIPIN/W/STARTER BASE			
SOCKET/FLR/BIPIN/W/STARTER BASE			
SOCKET/FLR/CONEXXION			
SOCKET/FLR/HH/13551			
SOCKET/FLR/HH/215			
SOCKET/FLR/HH/314			
SOCKET/FLR/HH/315			

TITLE: SOP - APPENDIX B - INTERIOR VEHICLE MATERIALS  
VERSION: 2  
STATUS: DRAFT  
APPROVED DATE:



Professional Lighting and Sign Management  
Companies of America

The following document is an attachment to PLASMA Standard Operating Procedures. For instruction on use, please refer to PLASMA Official SOP Manual.

**"INTERIOR VEHICLE MATERIALS"  
APPENDIX "A"**

SOCKET/FLR/HH/F59			
SOCKET/FLR/HH/SPRING END/572			
SOCKET/FLR/HH-RECESSED/516			
SOCKET/FLR/HO/13550			
SOCKET/FLR/HO/465			
SOCKET/FLR/HO/714			
SOCKET/FLR/HO/900-1			
SOCKET/FLR/HO/901-1			
SOCKET/FLR/HO/PLNGER/464			
SOCKET/FLR/HO/TOMBSTONE/SPRING			
SOCKET/FLR/HO/TOMBSTONE/SOLID			
SOCKET/FLR/HO/TOMBSTONE/SOLID			
SOCKET/FLR/HO-FIXED/524			
SOCKET/FLR/HO-PUSH IN/530-5			
SOCKET/FLR/HO-SPRING			
SOCKET/FLR/HO-SPRING-GASKETED			
SOCKET/FLR/HO-STATIONARY			
SOCKET/FLR/HO-STATIONARY-GASKETED			
SOCKET/FLR/INTERLOCK			
SOCKET/FLR/PORC.-MED BASE			
SOCKET/FLR/SINGLEPIN/PLUNGER			
SOCKET/FLR/STATIONARY/530-6			
SOCKET/FLR/TOP/BTM/14339			
SOCKET/HALOGEN/BIPIN/MR16			
SOCKET/HALOGEN/BIPIN/MR16			
SOCKET/FLR/SLIMLINE-SPRING			
SOCKET/FLR/SLIMLINE-STATIONARY			
SOCKET/HID/PORC.-MED BASE			
SOCKET/HID/PORC.-MOGUL BASE			
SOCKET/HID/SDW			
WIRE 10GA			
WIRE 12GA			
WIRE 16GA			
WIRE GTO			
Wire nuts org/yellow/red/blue			
Screw assortment			



Professional Lighting and Sign Management  
Companies of America

The following document is an attachment to PLASMA Standard Operating Procedures. For instruction on use, please refer to PLASMA Official SOP Manual. **"EXTERIOR VEHICLE MATERIALS" APPENDIX "B"**

<b>BALLASTS</b>
BALLAST/HID/1L-50WHPS/MT
BALLAST/HID/1L-70W/HPS/MT
BALLAST/HID/1L-70WMH/MT
BALLAST/HID/1L-100WHPS/MT
BALLAST/HID/1L-100WMH/MT
BALLAST/HID/1L-150WHPS/MT
BALLAST/HID/1L-175WMH/MT
BALLAST/HID/1L-250WHPS/MT
BALLAST/HID/1L-250WMH/MT
BALLAST/HID/1L-320WPS/MT
BALLAST/HID/1L-350WPS/MT
BALLAST/HID/1L-400WHPS/MT
BALLAST/HID/1L-400WHPS/480V
BALLAST/HID/1L-400WMH/MT
BALLAST/HID/1L-400WMH/480V
BALLAST/HID/1L-1000WHPS/MT
BALLAST/HID/1L-1000WHPS/480V
BALLAST/HID/1L-1000WMH/MT
BALLAST/HID/1L-1000WMH/480V
SOCKET/FLR/HO-STATIONARY-GASKETED
BALLAST/HID/1L-175WMH/MT
71A6542-001 ADV 1-1000W 480 MH BAL
71A7971-001D 70W QUAD HPS BAL
BALLAST/HID/1L-100MH/120/277V
F108
<b>MISC</b>
SOCKET/FLR/BI-PIN
SOCKET/FLR/BIPIN/1650SW
SOCKET/FLR/BIPIN/258892
SOCKET/FLR/BIPIN/326W
SOCKET/FLR/BIPIN/3911W
SOCKET/FLR/BIPIN/750779
SOCKET/FLR/BIPIN/W/STARTER BASE
SOCKET/FLR/BIPIN/W/STARTER BASE
SOCKET/FLR/CONEXXION
SOCKET/FLR/HH/13551
SOCKET/FLR/HH/215
SOCKET/FLR/HH/314
SOCKET/FLR/HH/315
SOCKET/FLR/HH/F59
SOCKET/FLR/HH/SPRING END/572
SOCKET/FLR/HH-RECESSED/516
SOCKET/FLR/HO/13550
SOCKET/FLR/HO/465
SOCKET/FLR/HO/714
SOCKET/FLR/HO/900-1
SOCKET/FLR/HO/901-1
SOCKET/FLR/HO/PLNGER/464
SOCKET/FLR/HO/TOMBSTONE/SPRING
SOCKET/FLR/HO/TOMBSTONE/SOLID
SOCKET/FLR/HO/TOMBSTONE/SOLID
SOCKET/FLR/HO-FIXED/524
SOCKET/FLR/HO-PUSH IN/530-5
BALLAST/FLR/2L-32T8/120V/RH/ELECT
BALLAST/FLR/2L-40T12/120V/HP/ELECT
BALLAST/FLR/2L-96T12/120V/STP/MAG
BALLAST/FLR/2L-96T12/800MA/120V/MAG
BALLAST/FLR/4L-32T8/120V/RH/ELECT
BALLAST/FLR/SIGN 2 - 4 LAMPS/120V/MAG
BALLAST/FLR/SIGN 3 - 6 LAMPS/120V/MAG
BALLAST/FLR/SIGN 2 - 4 LAMPS/277V/MAG
BALLAST/FLR/SIGN 3 - 6 LAMPS/277V/MAG
<b>NEON TRANSFORMERS</b>
12030P5G2 SMART TRANSFORMER
15030P5G2 SMART TRANSFORMER
7530P5G2 SMART TRANSFORMER
9030P5G2 SMART TRANSFORMER
12030PBKMG-51 SMART TRANSFORMER
15030PBKMG-51 SMART TRANSFORMER
7530PBKMG-51 SMART TRANSFORMER
9030PBKMG-51 SMART TRANSFORMER
<b>FLUORESCENT LAMPS</b>

TITLE: SOP – APPENDIX C - EXTERIOR VEHICLE MATERIALS  
VERSION: 2  
STATUS: DRAFT  
APPROVED DATE:





Professional Lighting and Sign Management  
Companies of America

The following document is an attachment to PLASMA Standard Operating Procedures. For instruction on use, please refer to PLASMA Official SOP Manual. **"EXTERIOR VEHICLE MATERIALS" APPENDIX "B"**

LAMP/FLR/17T8/4100K
LAMP/FLR/20T12/COOL WHITE
LAMP/FLR/25T8/4100K
LAMP/FLR/30T12/COOL WHITE
LAMP/FLR/32T8/4100K
LAMP/FLR/32T8/4100K/U6
LAMP/FLR/40T12/4100K
LAMP/FLR/40T12/4100K/U6
LAMP/FLR/24T12/COOL WHITE/800MA
LAMP/FLR/24T12/DAYLIGHT/800MA
LAMP/FLR/30T12/COOL WHITE/800MA
LAMP/FLR/30T12/DAYLIGHT/800MA
LAMP/FLR/36T12/COOL WHITE/800MA
LAMP/FLR/36T12/DAYLIGHT/800MA
LAMP/FLR/42T12/COOL WHITE/800MA
LAMP/FLR/42T12/DAYLIGHT/800MA
LAMP/FLR/48T12/COOL WHITE/800MA
LAMP/FLR/48T12/DAYLIGHT/800MA
LAMP/FLR/60T12/COOL WHITE/800MA
LAMP/FLR/60T12/DAYLIGHT/800MA
LAMP/FLR/64T12/COOL WHITE/800MA
LAMP/FLR/64T12/DAYLIGHT/800MA
LAMP/FLR/72T12/COOL WHITE/800MA
LAMP/FLR/72T12/DAYLIGHT/800MA
LAMP/FLR/84T12/COOL WHITE/800MA
LAMP/FLR/84T12/DAYLIGHT/800MA
LAMP/FLR/96T12/COOL WHITE/800MA
LAMP/FLR/96T12/DAYLIGHT/800MA
LAMP/FLR/108T12/COOL WHITE/800MA
LAMP/FLR/108T12/DAYLIGHT/800MA
LAMP/FLR/117T12/COOL WHITE/800MA
LAMP/FLR/117T12/DAYLIGHT/800MA
LAMP/FLR/120T12/COOL WHITE/800MA
LAMP/FLR/120T12/DAYLIGHT/800MA
<b>HID LAMPS</b>
LAMP/HID/50W/HPS/UNV/MED
LAMP/HID/70W/HPS/UNV
LAMP/HID/70W/HPS/UNV/MED
LAMP/HID/70W/MET HAL/UNV/MED
LAMP/HID/100W/HPS/UNV/MED
LAMP/HID/100W/MET HAL/MED
LAMP/HID/150W/HPS/UNV
LAMP/HID/150W/HPS/UNV/MED
LAMP/HID/175W/MET HAL/UNV-COATED
LAMP/HID/175W/MET HAL/UNV
LAMP/HID/175W/MET HAL/UNV/MED
LAMP/HID/250W/HPS/UNV
LAMP/HID/250W/MET HAL/UNV
LAMP/HID/320W/PS/BT28
LAMP/HID/350W/PS/BT28
LAMP/HID/400W/HPS/UNV
LAMP/HID/400W/MET HAL/ED28
LAMP/HID/400W/MET HAL/UNV
LAMP/HID/400W/MET HAL/UNV-COATED
LAMP/HID/400W/MET HAL/HOR
LAMP/HID/400W/MERC
LAMP/HID/1000W/HPS/UNV
LAMP/HID/1000W/MET HAL/UNV
LAMP/HID/1000W/MET HAL/UNV-BT37
<b>INCANDESCENT LAMPS</b>
LAMP/INCAN/100WA-S/130V
LAMP/INCAN/11S14 CL
LAMP/INCAN/120WBR40-RFL.FLD/130V
LAMP/INCAN/30W-R20/130V
LAMP/INCAN/500W/DOUBLE ENDED QUARTZ/130V
LAMP/INCAN/50W/MR16/HALOGEN-FLD40
LAMP/INCAN/50W/MR16/HALOGENNARROW FLD25
LAMP/INCAN/50W-MR16/DC BASE
LAMP/INCAN/50W-MR16/HALOGEN
LAMP/INCAN/50W-PAR20/HALOGEN-FLD
LAMP/INCAN/50W-PAR20/HALOGEN-FLD/130V
LAMP/INCAN/50W-PAR20/HALOGEN-FLD/SPLNFL
LAMP/INCAN/50W-PAR30/HALOGEN-FLD/130V
LAMP/INCAN/75W-PAR30/HALOGEN-FLD/LHFL
LAMP/INCAN/90W-PAR38/HALOGEN-FLD/130V

TITLE: SOP – APPENDIX C - EXTERIOR VEHICLE MATERIALS  
VERSION: 2  
STATUS: DRAFT  
APPROVED DATE:



Professional Lighting and Sign Management  
Companies of America

The following document is an attachment to PLASMA Standard Operating Procedures. For instruction on use, please refer to PLASMA Official SOP Manual. **"EXTERIOR**

**VEHICLE MATERIALS" APPENDIX "B"**

<b>MISC</b>
SOCKET/FLR/BI-PIN
SOCKET/FLR/HO-SPRING
SOCKET/FLR/HO-SPRING-GASKETED
SOCKET/FLR/HO-STATIONARY
SOCKET/FLR/HO-STATIONARY-GASKETED
SOCKET/FLR/INTERLOCK
SOCKET/FLR/PORC.-MED BASE
SOCKET/FLR/SINGLEPIN/PLUNGER
SOCKET/FLR/STATIONARY/530-6
SOCKET/FLR/TOP/BTM/14339
SOCKET/HALOGEN/BIPIN/MR16
SOCKET/HALOGEN/BIPIN/MR16
SOCKET/FLR/SLIMLINE-SPRING
SOCKET/FLR/SLIMLINE-STATIONARY
SOCKET/HID/PORC.-MED BASE
SOCKET/HID/PORC.-MOGUL BASE
WIRE 10GA
WIRE 12GA
WIRE 16GA
WIRE GTO
Wire nuts org/yellow/red/blue
Screw assortment
NEON PK HOUSINGS
NEON BOOTS
FUSE HOLDERS
FUSES
Breakers

TITLE: SOP – APPENDIX C - EXTERIOR VEHICLE MATERIALS  
VERSION: 2  
STATUS: DRAFT  
APPROVED DATE: